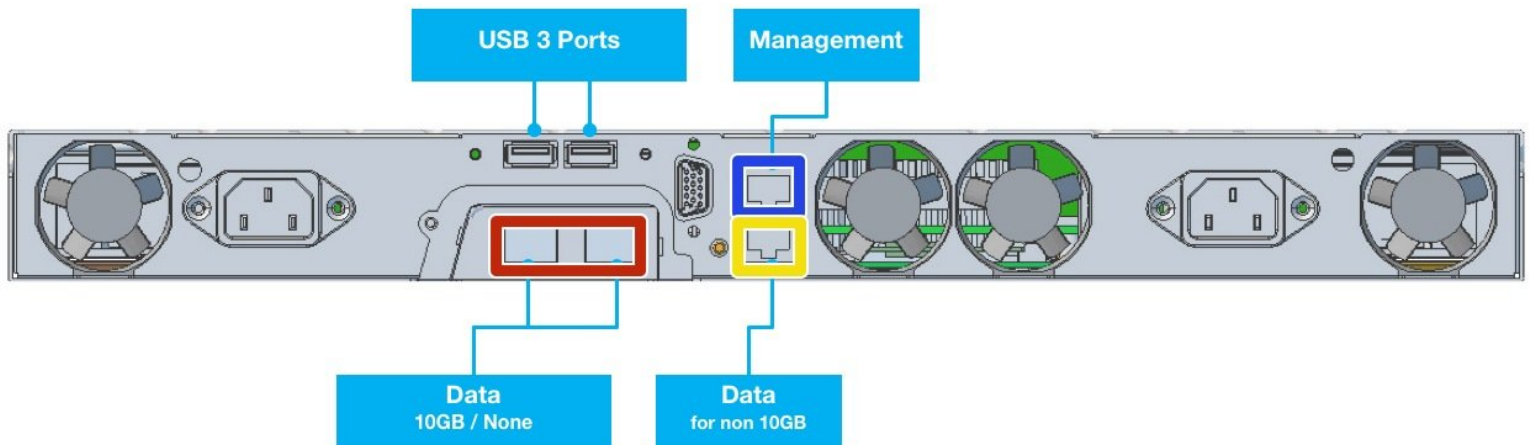




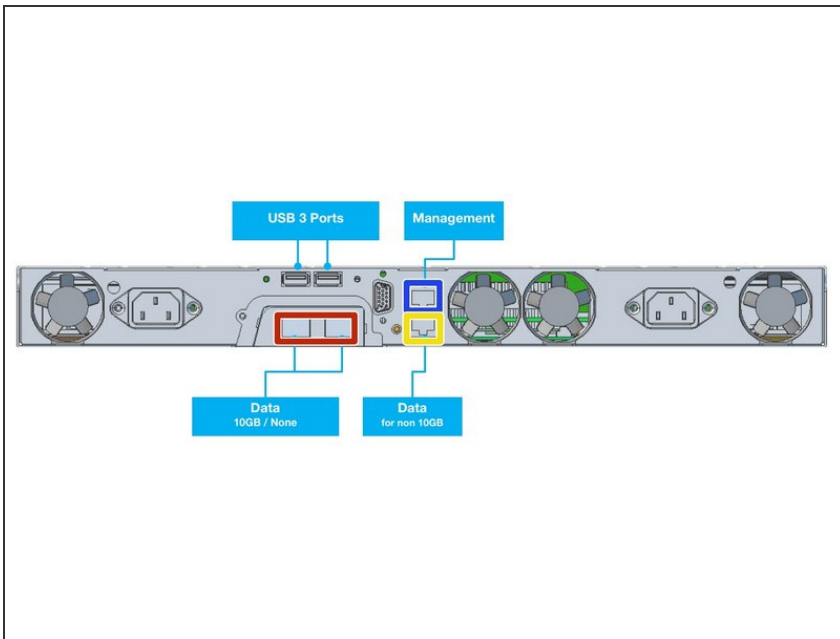
G2000 initial connection

This Guide shows how to connect your G5000 to the network

Written By: Rene Weber



Step 1 — Connect network cables

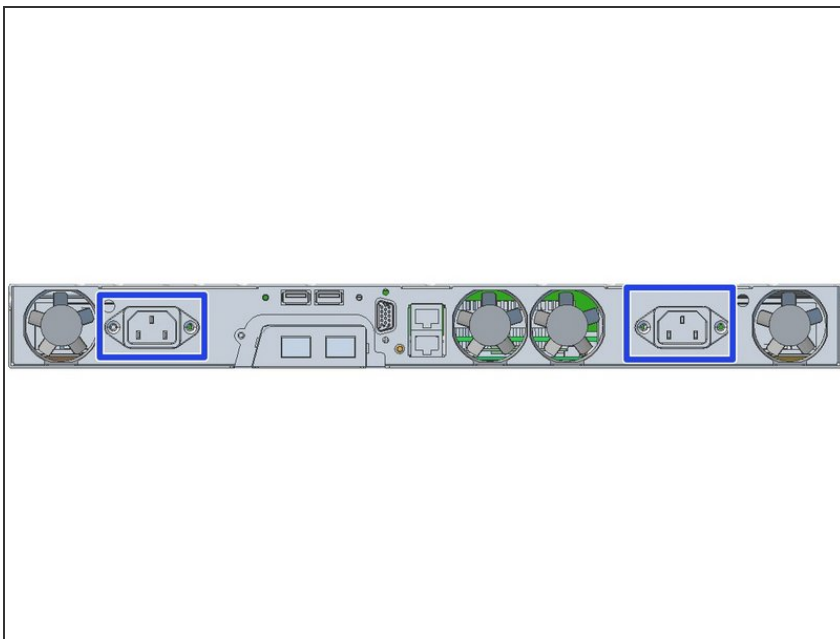


⚠ Management and Data **must not be in the same subnet**

i Management and Data may be combined to one interface later

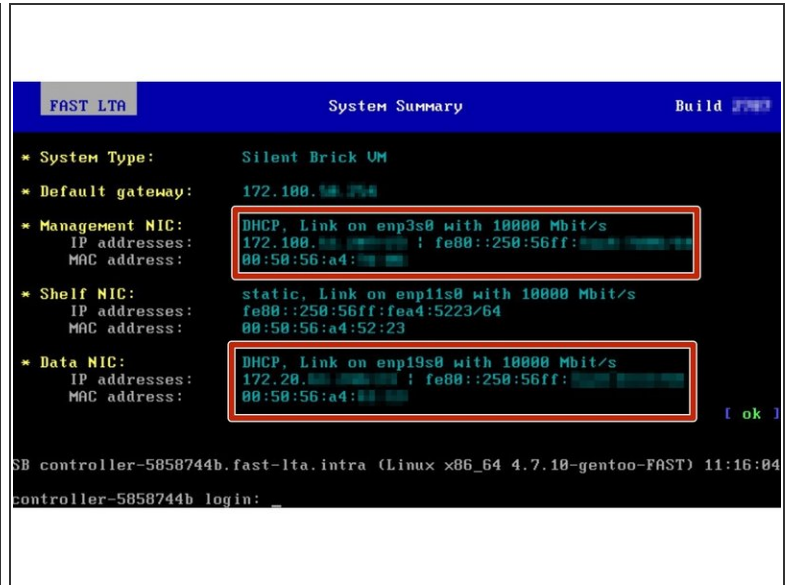
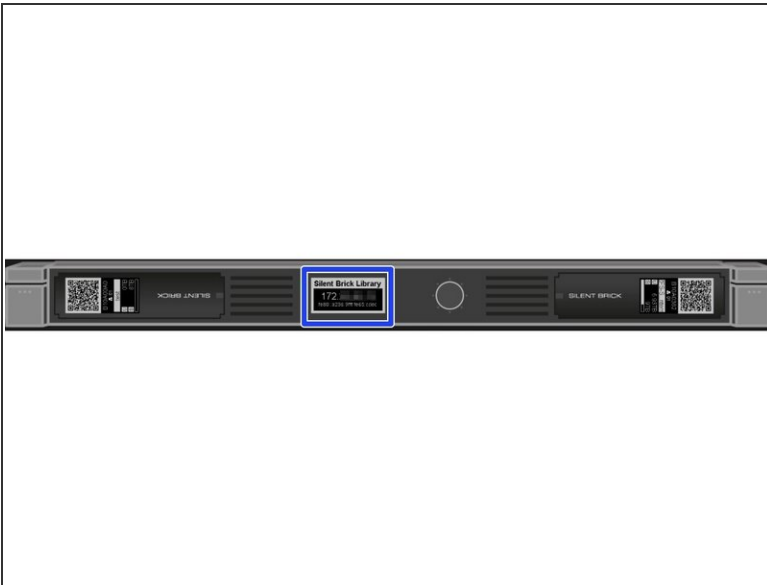
- Connect 1GB Ethernet to Management port for Configuration via WebUI
- Connect Ethernet cable to data port.
 - Internal interface if no external card equipped
 - External 10GB card if equipped

Step 2 — Connect power supply



- Start up your system by connecting the power cables

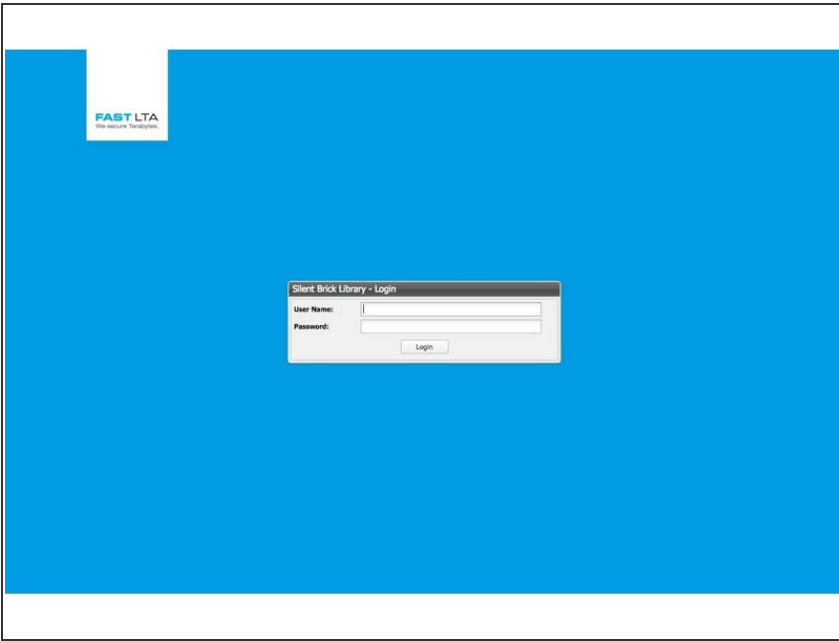
Step 3 — Receive the IP Address



i G2000 will try to receive IP addresses via DHCP on management and data interfaces

- If no DHCP server can be found G2000 will assign fallback IP addresses as follows
 - Management: 192.168.1.1
 - Data: 192.168.2.1
- The assigned IP addresses may be checked via...
 - ...G2000 EPaper Display
 - ...monitor output

Step 4 — Connect to the UI



- Open the Webinterface via management ip "https://<ip>/"
- Default username: admin
- Default password: adminadmin