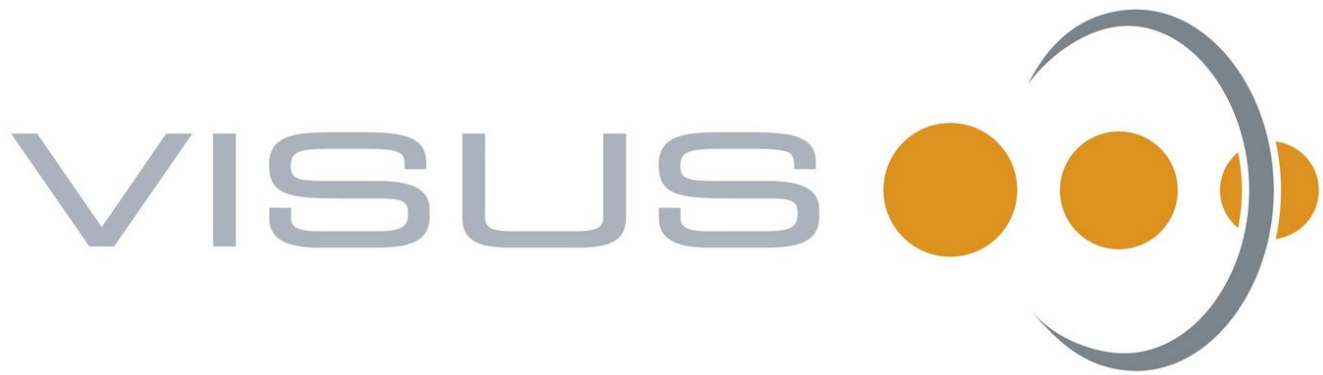




VISUS JiveX 5.0.4 Connection

This guide describes the procedure of setting up Visus JiveX in combination with the Silent Brick Archive

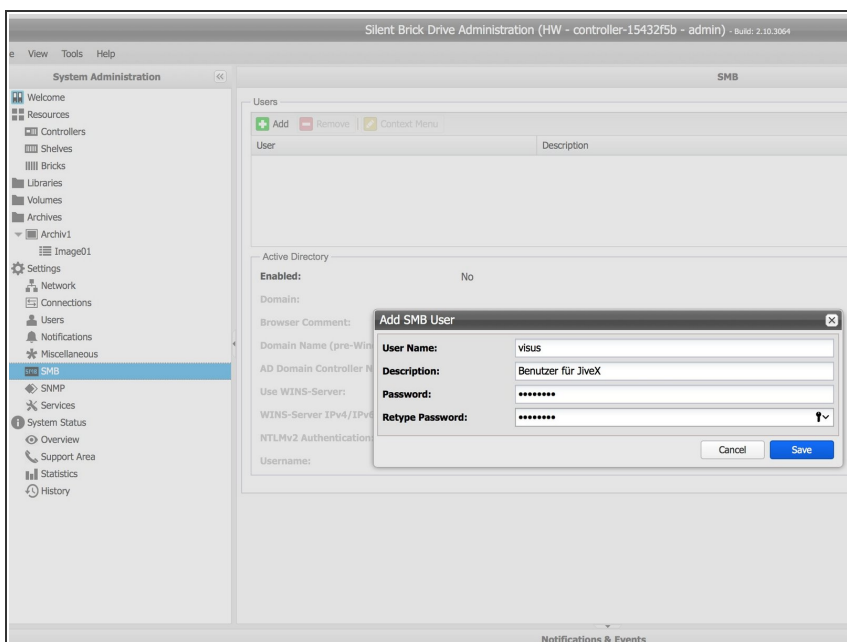
Written By: Rene Weber



INTRODUCTION

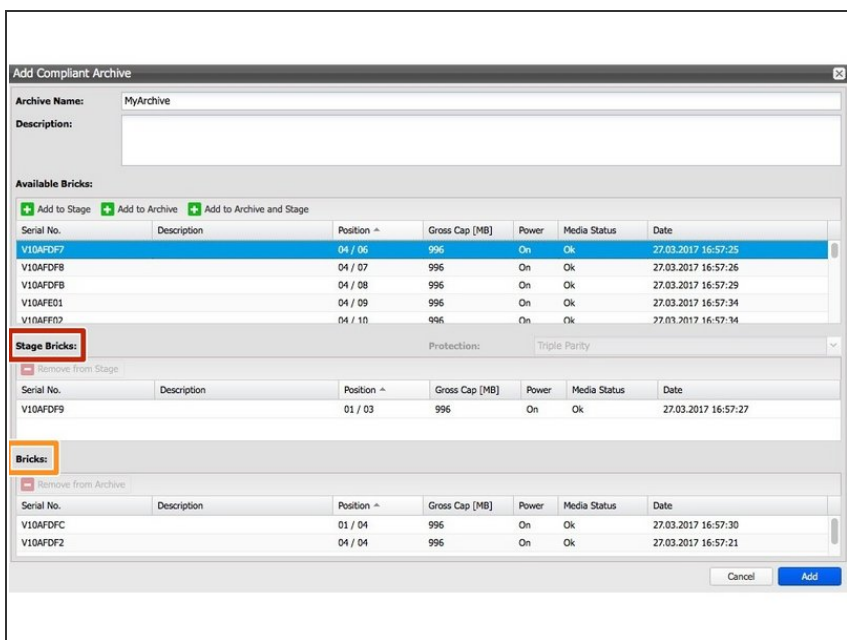
This guide describes the procedure of setting up Visus JiveX 5.0.4 in combination with the Silent Brick Archive Version 2.10

Step 1 — Create user



- Create the new SMB user in the SMB section of the User Interface.
- Username: visus
- Password: As defined by Visus

Step 2 — Create Compliant Archive



- Assign at least one Brick to the Stage Bricks. Brick may be
 - Standard Brick
 - FLASH Brick
 - WORM Brick. Will be partitioned. Size as needed. Default: 1TB
- Add one or more Bricks to the Archive

Step 3 — Create subvolume

Name:
Image01

Description:
WORM Image Directory 01

Volume type:
WORM with retention (RWRO triggered)

Safe files | Miscellaneous

☒ **List**

File extension:
safe

File format:
xml

Years: 30 **Days:** 0 **Hours:** 0 **Minutes:** 0

- Choose 'add' under 'Sub Volumes' Tab of your archive
- Volume Name: Image01
- Volume Type: WORM with Retention (RWRO triggered)
- Retention: As desired. Default 30 Years
- Safe files listing: Yes
- Do not archive 0-byte files: Yes
- Prevention: Prevent renaming of files & directories

Step 4 — Create share

Add SMB Share

Please enter name, path, configuration and permissions for this share.

Share Path: /

Share Name: Image01

☐ **Read Only** ☒ **Browseable**

☒ **Case Sensitive**

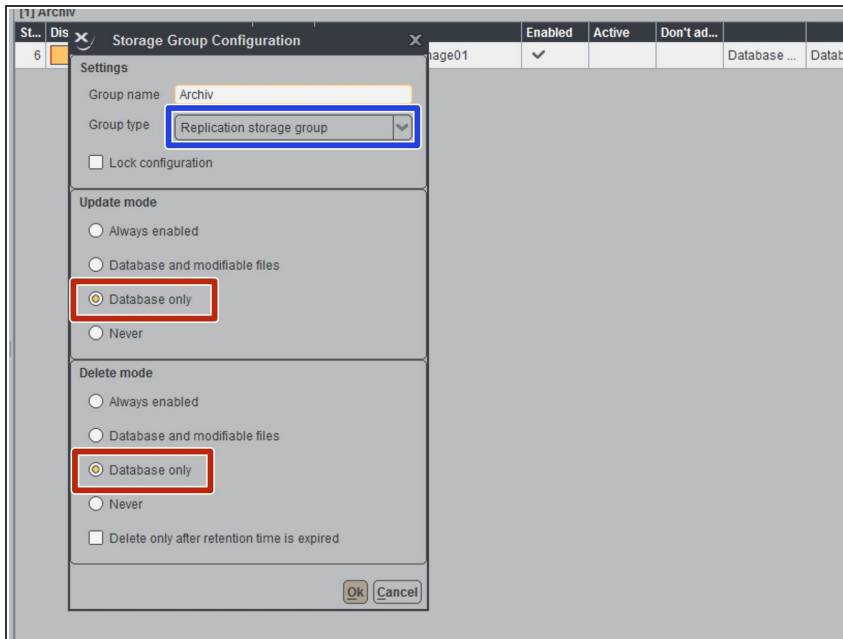
☒ **Public**

Group/User Permissions:

Name	Type
visus	User

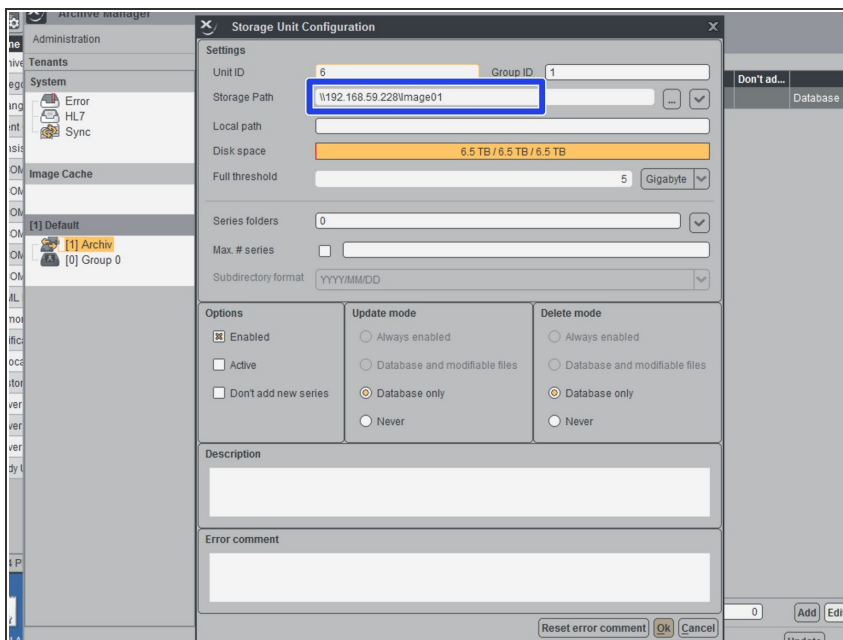
- Choose 'Shares' -> 'Add'
- Share path: /
- Share name: Image01
- Read Only: No
- Case sensitive: Yes
- Browseable: Yes
- User: visus

Step 5 — Visus: Add Storage Group



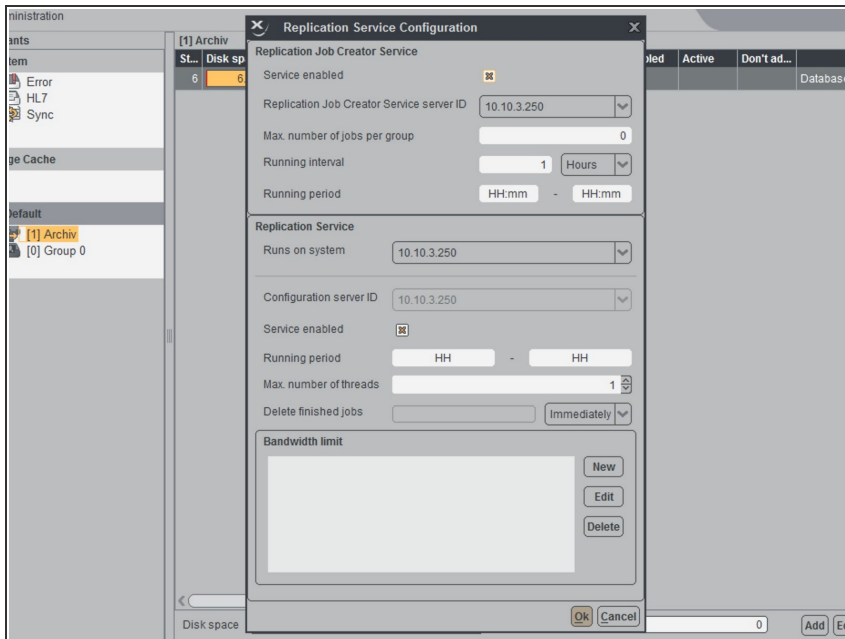
- Storage group type: Replication group
- Mode and Delete mode: database only

Step 6 — Visus: Add a Storage Unit



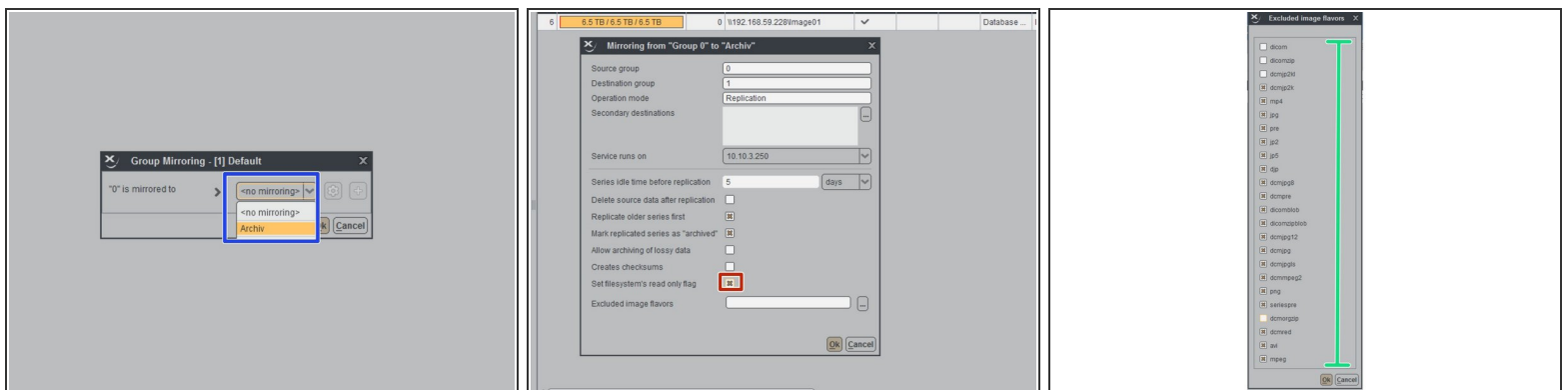
- Choose your storage group
- Select 'add' to create a new storage unit
- Enter the UNC path of the Silent Brick Share

Step 7 — Visus: Set up Replication Service Configuration



- Set up your Replication Service Configuration

Step 8 — Visus: Set up Group Mirroring



- Right click your Storage Group
- Set up Group Mirroring
- Select your Storage Group as Target
- Select 'Set filesystem's read only flag' to support Silent Brick Volume Type 'WORM with Retention (RWRO triggered)
- Set up 'Excluded image flavors' as desired. The screenshot represents a default configuration.

