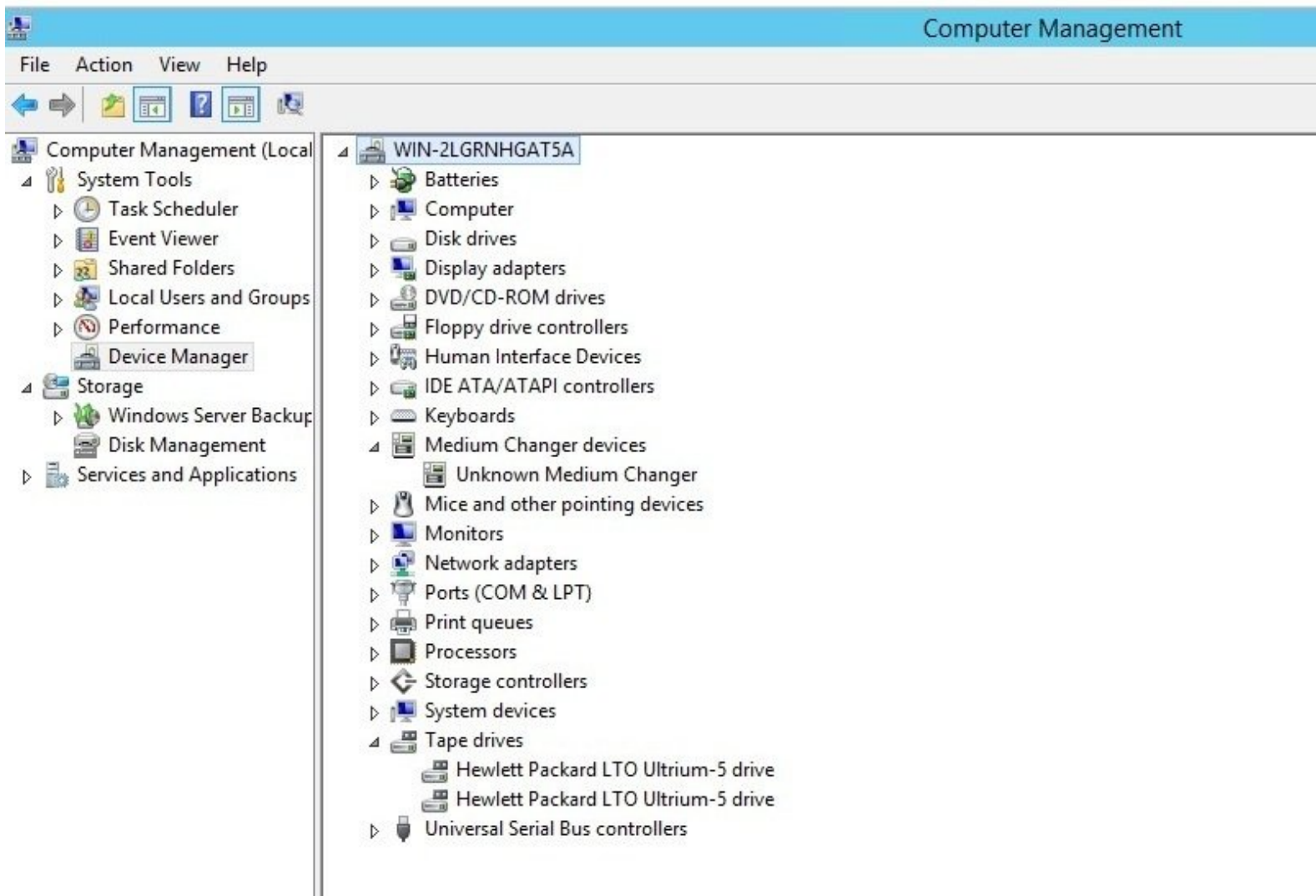




Atempo Tina - Connect VTL

Connect ATEMPO Tina with Silent Bricks VTL

Written By: Rene Weber



INTRODUCTION

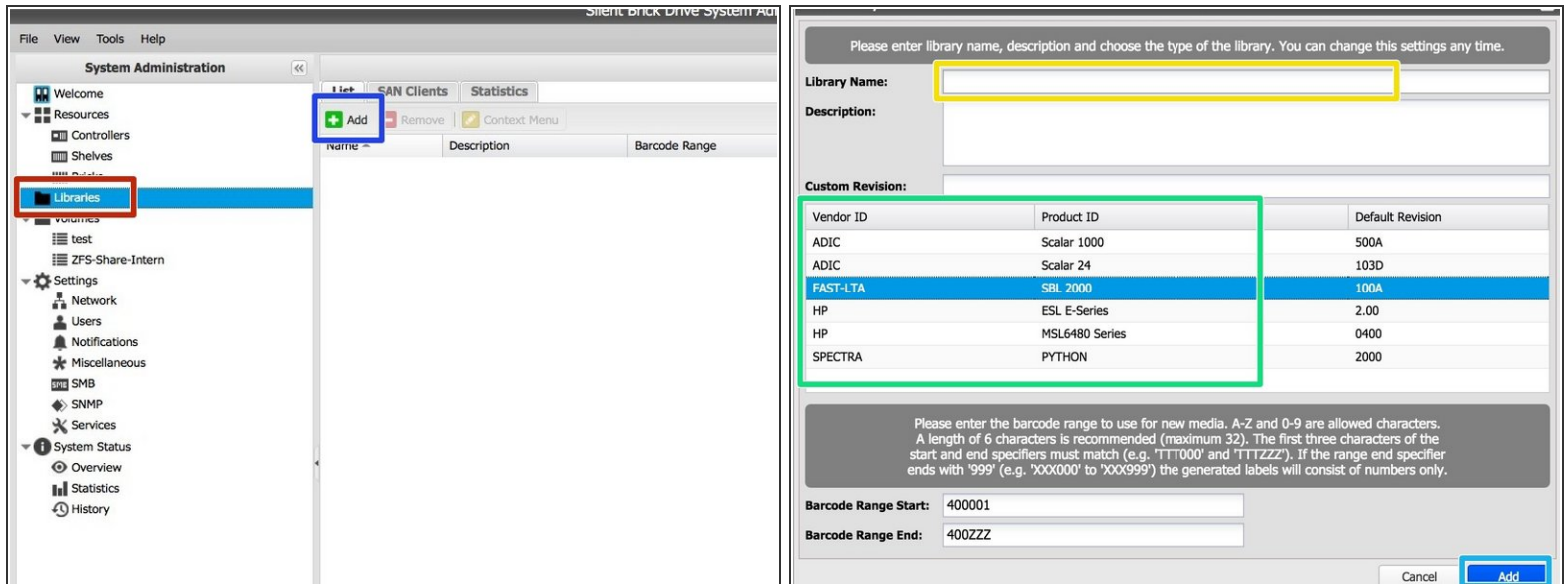
This guide describes the procedure of connecting Atempo Tina V4.6 with the Silent Brick System V2.10 as a Tape Library.

Recommended Emulation

Media Changer: HP MSL 6480

Drives: HP Ultrium-5

Step 1 — Add Library



The screenshot shows the Silent Brick Drive System GUI. On the left, the 'Libraries' menu item is highlighted with a red box. In the main area, the 'Add' button is highlighted with a blue box. On the right, the 'Add Library' dialog is open. The 'Library Name' field is highlighted with a yellow box. The 'Custom Revision' table is highlighted with a green box. The 'Barcode Range Start' and 'Barcode Range End' fields are highlighted with blue boxes.

Library Name:

Description:

Custom Revision:

Vendor ID	Product ID	Default Revision
ADIC	Scalar 1000	500A
ADIC	Scalar 24	103D
FAST-LTA	SBL 2000	100A
HP	ESL E-Series	2.00
HP	MSL6480 Series	0400
SPECTRA	PYTHON	2000

Please enter the barcode range to use for new media. A-Z and 0-9 are allowed characters. A length of 6 characters is recommended (maximum 32). The first three characters of the start and end specifiers must match (e.g. 'TTT000' and 'TTTZZZ'). If the range end specifier ends with '999' (e.g. 'XXX000' to 'XXX999') the generated labels will consist of numbers only.

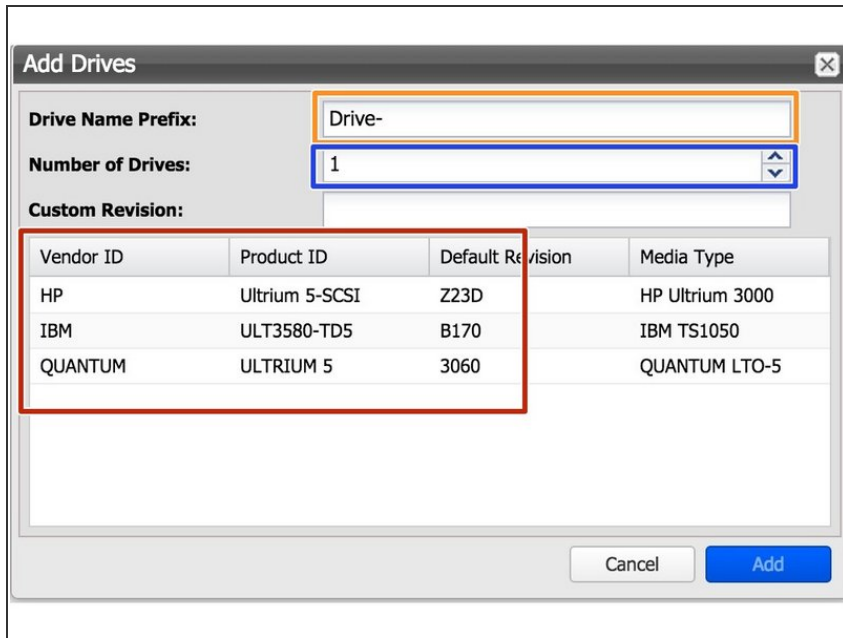
Barcode Range Start:

Barcode Range End:

Buttons: Cancel, Add

- Open the Silent Brick System GUI via a web browser
- Choose 'Libraries'
- Click 'Add'
- Enter a name
- Choose the desired library type

Step 2 — Add Drives



Add Drives

Drive Name Prefix: Drive-

Number of Drives: 1

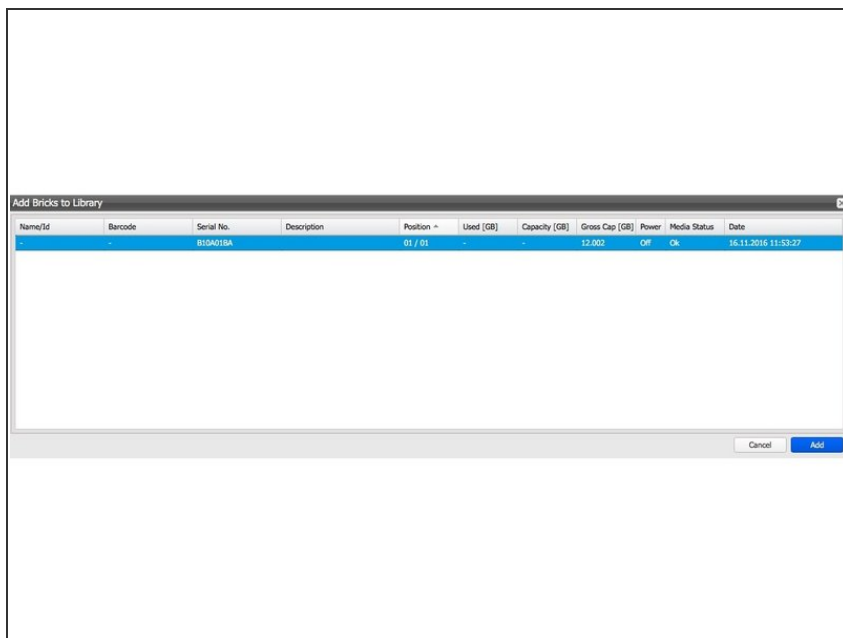
Custom Revision:

Vendor ID	Product ID	Default Revision	Media Type
HP	Ultrium 5-SCSI	Z23D	HP Ultrium 3000
IBM	ULT3580-TD5	B170	IBM TS1050
QUANTUM	ULTRIUM 5	3060	QUANTUM LTO-5

Cancel Add

- Edit 'Drive Name Prefix' if needed.
- Choose a number of drives.
- Choose the desired drive type.

Step 3 — Add Bricks



Add Bricks to Library

Name/Id	Barcode	Serial No.	Description	Position	Used [GB]	Capacity [GB]	Gross Cap [GB]	Power	Media Status	Date
-	-	B15A018A		01 / 01	-	-	12,000	Off	OK	16.11.2016 11:53:27

Cancel Add

- Choose the desired amount of Bricks from the list.
- Use 'CTRL' to choose multiple Bricks.
- Confirm by clicking 'Add'

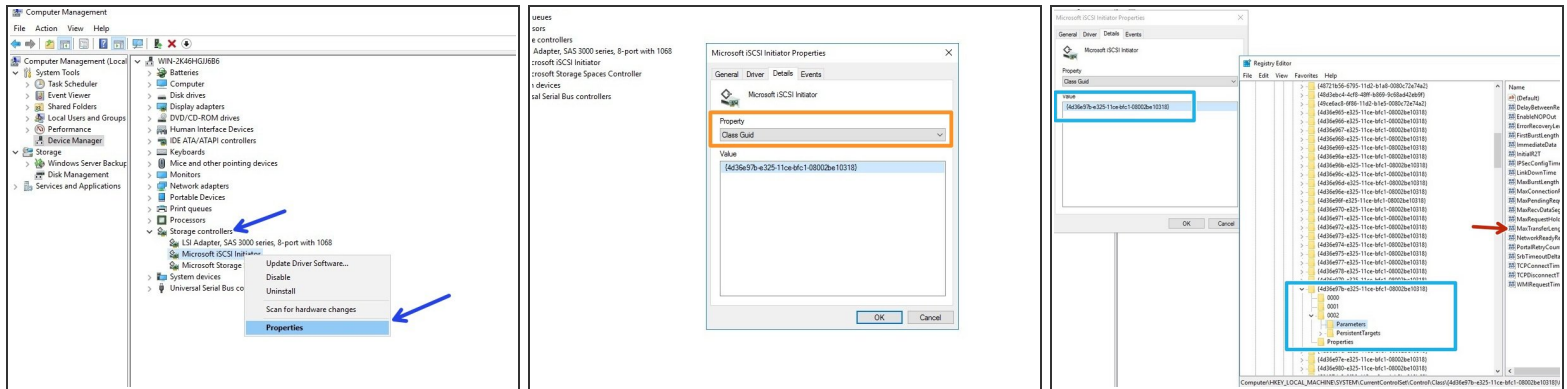
Step 4 — Setup iSCSI SAN client

The image displays two screenshots from the Silent Brick web interface. The left screenshot shows the 'iSCSI Initiator Properties' dialog with the 'Targets' tab selected. The 'Initiator Name' field contains 'iqn.1991-05.com.microsoft:win-shmu49sd0v2' and is highlighted with a yellow box. The right screenshot shows the 'Add SAN Client' dialog. The 'Protocol' is set to 'iSCSI' (green box), 'Access' is 'Client', and 'Client Name' is empty (blue box). The 'Initiator Name' field is empty (red box). The 'Allow Unauthenticated Access' radio button is selected (pink box). The 'Target Name' is 'iqn.2017-01.de.fast-lta:sb-lab.seplib' and 'Target IP' is '192.168.2.1'.

Best use with 10GB ethernet

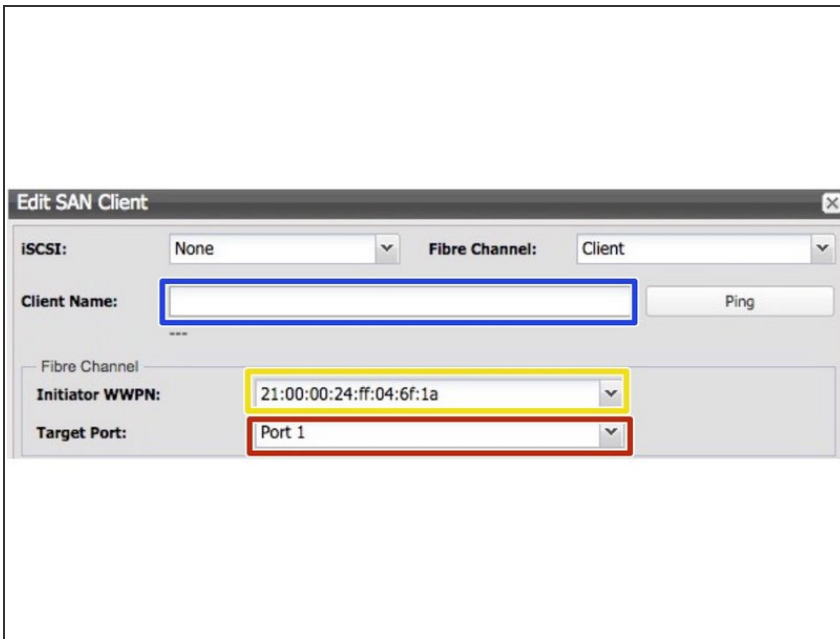
- Get your iscsi initiator name from Windows
- Set up an iscsi client via Silent Brick web interface by choosing protocol iSCSI
 - Client Name: Enter the IP or the name of the client windows host
 - Initiator name: Enter the initiator string you retrieved in step 1
 - Authentication: If needed, authentication may be set up. Recommendation is no authentication

Step 5 — Adjust iSCSI blocksize



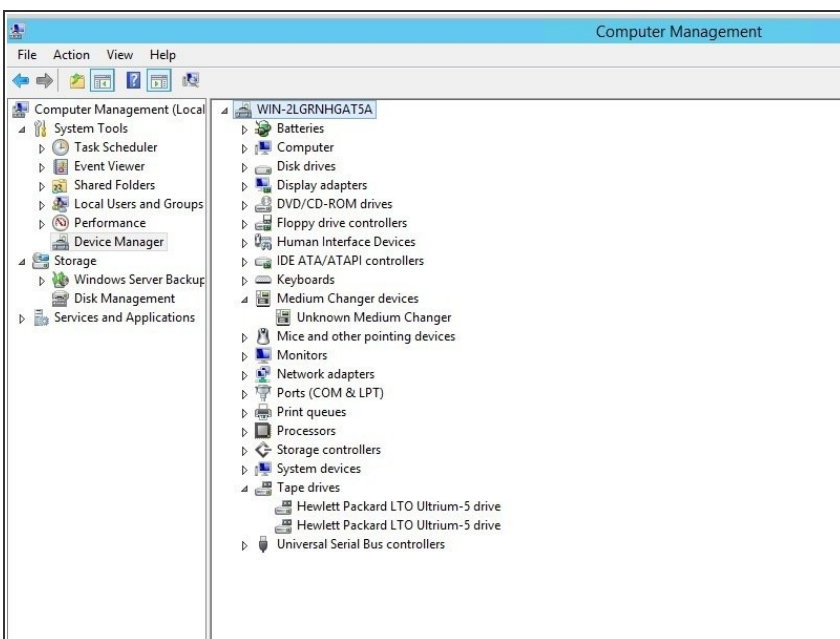
- Open your Windows Computer Manager and expand "Storage Controllers"
- Select your iSCSI Initiator and choose properties
- Switch to Details and choose the property "Class Guid"
- Open regedit and navigate to **HKEY_LOCAL_MACHINE - System - CurrentControlSet - Control - Class - <iSCSI Class ID> - <ID> - Parameters**
- In Parameters adjust the 'MaxTransferLength'. This value must match your Tape Block size (configured later). 1 MB=0x100000, 512KB=0x80000, 256KB=0x40000. Recommended minimum 256 K

Step 6 — Setup fibre channel client



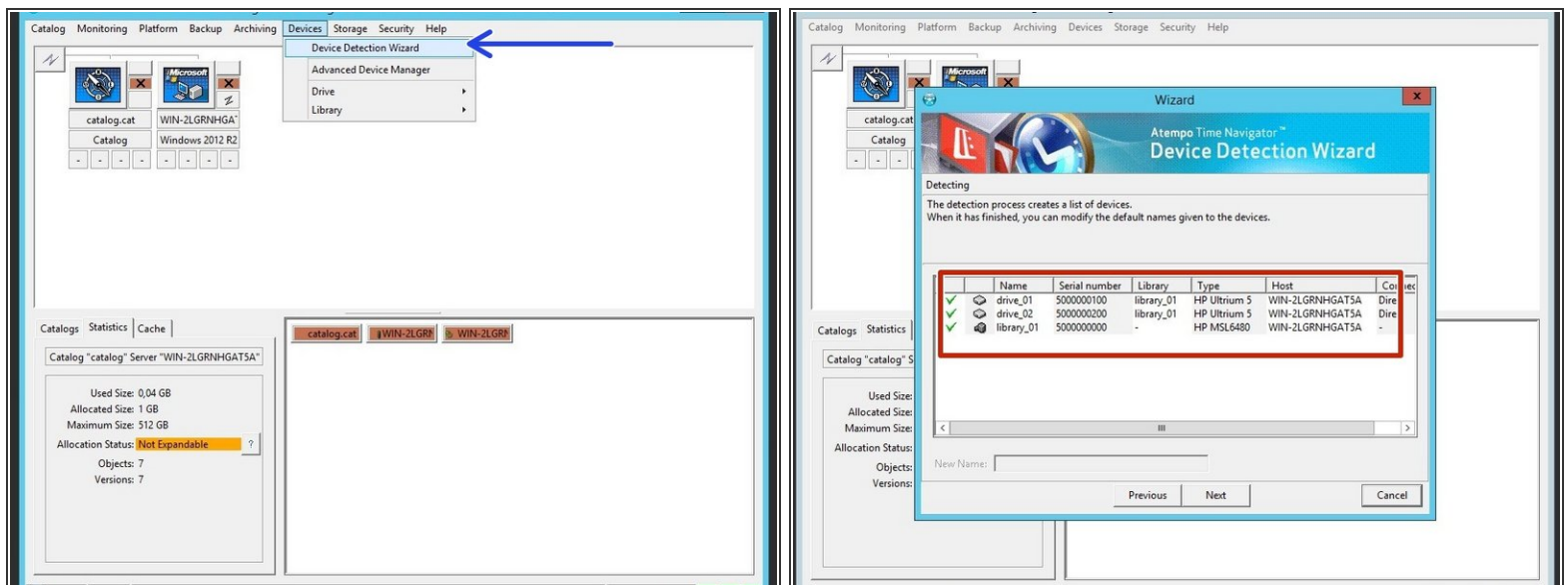
- ✓ Only supported for controllers with fibre channel
- Client Name: Enter the IP or the name of the client windows host.
- Target Port: Choose port to connect to.
 - Port enumeration is from right to left.
 - When set to 'Everyone' the left Port 2 is used.
- Initiator WWN: Choose partner WWN to connect with.

Step 7 — Check device installation



- Make sure a proper driver is installed for your Tape Drives
- Make sure the Windows Driver is removed of your Media Changer

Step 8 — Connect to Tina



- Open the Device Detection Wizard under Devices
- Make sure your library and your drives were successfully found