



SB Connectivity CC-Egov

This manual is for connecting the archival software CC-DMS and CC-ECM

Written By: Rene Weber



INTRODUCTION

This manual is for connecting the archival software CC-DMS and CC-ECM.

This guide is tested with the Silent Brick WORM Archive Version 2.11

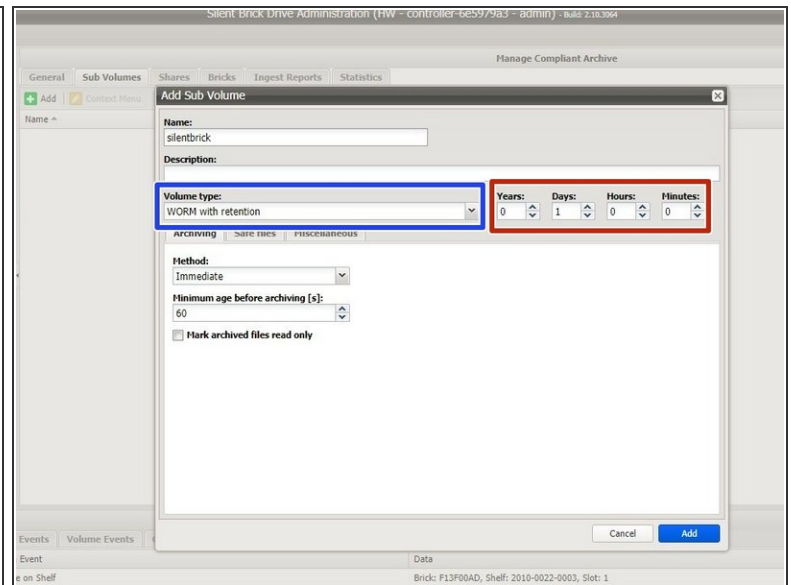
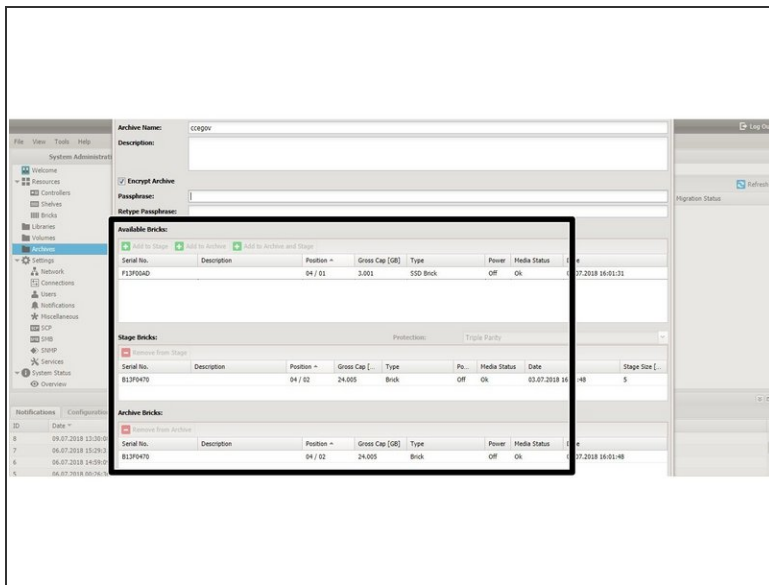
Step 1 — General Information

⚠ Requirements Compliance Option is necessary to enable various WORM volume types.

i Installation and Connectors Installation and electrical connection as well as network connection are to be done as described in the manual Installation

i Network Adjustments The network settings are to be adjusted as described in the manual Installation

Step 2 — Volume Settings



- Create an archive including WORM and Stage Brick
- Create a sub-volume of type WORM with Retention.
- The retention period in years and days must be adopted to the value necessary for the data content being archived
- Select the option 'Prevent renaming of files'
- Select the option 'Do not archive 0-byte files'

Step 3 — Share Settings

- Create a SMB user in the SMB section of the user interface or join the active directory.
- Create a **SMB** share for the previously create volume
- Add the dedicated SMB user to the share permissions.

Step 4 — Connect CC-Egov

- Get in touch with CC-Egov in order to connect to the previously created share.