



# SB Connectivity Archiware

This manual is for connecting the backup and archival software Archiware P5. This guide is tested with P5 Version 5.5.5

Written By: Rene Weber



## INTRODUCTION

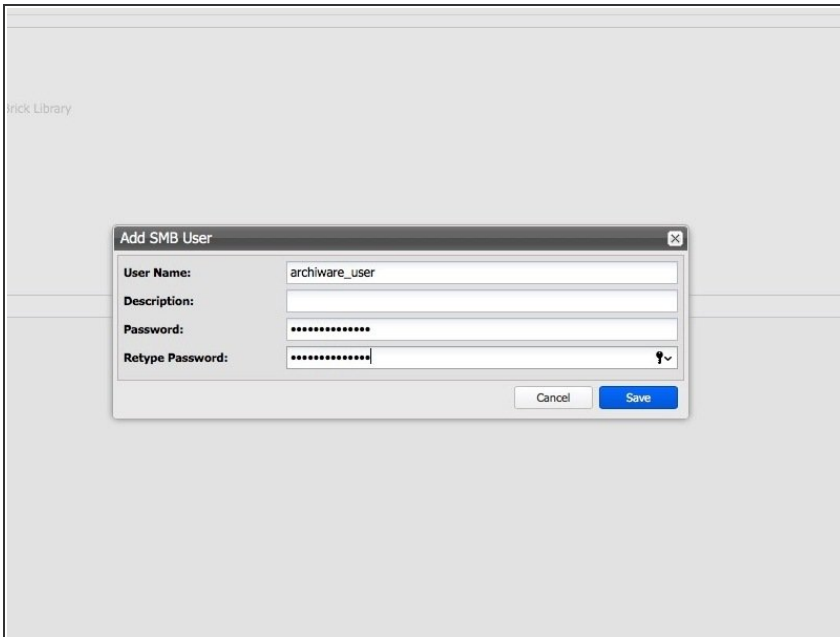
This manual is for connecting the backup and archival software Archiware P5.

This guide is tested with Archiware P5 Version 5.5.5 and the Silent Brick WORM Archive Version 2.11

## Step 1 — General Information

- i Installation and Connectors** Installation and electrical connection as well as network connection are to be done as described in the manual Installation
- i Network Adjustments** The network settings are to be adjusted as described in the manual Installation
- Archiware supports two different ways of connecting to the Silent Brick System. Both of the following connection methods are covered by this manual.
  - Connection to a SNAS Volume
  - Connection to a Virtual Tape Library

## Step 2 — SNAS - User setup



The screenshot shows a web interface with a modal dialog box titled "Add SMB User". The dialog box contains the following fields:

- User Name: archiware\_user
- Description: (empty)
- Password: (masked with dots)
- Retype Password: (masked with dots)

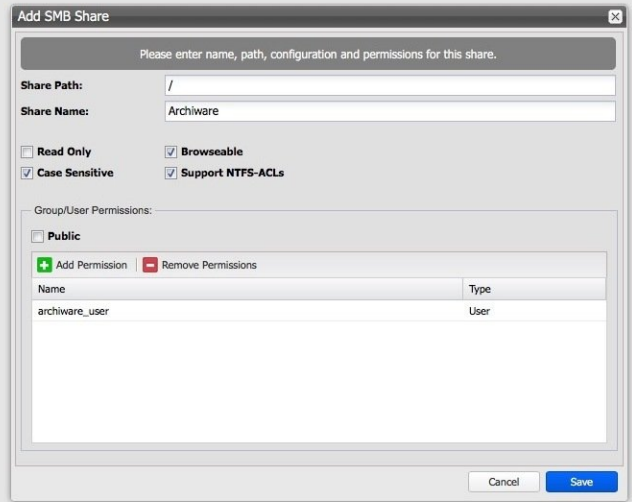
At the bottom of the dialog box, there are two buttons: "Cancel" and "Save".

- Connect to the Silent Brick Web Interface
- Switch to Settings -> SMB
- Create a user 'archiware\_user' with a proper password

## Step 3 — SNAS - Volume Setup



The 'Add Volume' dialog box is shown. It has a title bar with a close button. The 'Volume Name' field contains 'Archiware'. The 'Description' field is empty. The 'Type' dropdown is set to 'SNAS'. The 'Protection' dropdown is set to 'Triple Parity'. The 'Use compression' checkbox is checked. There are 'Cancel' and 'Add' buttons at the bottom right.



The 'Add SMB Share' dialog box is shown. It has a title bar with a close button. The 'Share Path' field contains '/'. The 'Share Name' field contains 'Archiware'. The 'Read Only' checkbox is unchecked. The 'Case Sensitive' checkbox is checked. The 'Browseable' checkbox is checked. The 'Support NTFS-ACLs' checkbox is checked. The 'Group/User Permissions' section shows a table with one entry: 'archiware\_user' of type 'User'. There are 'Cancel' and 'Save' buttons at the bottom right.

Name	Type
archiware_user	User

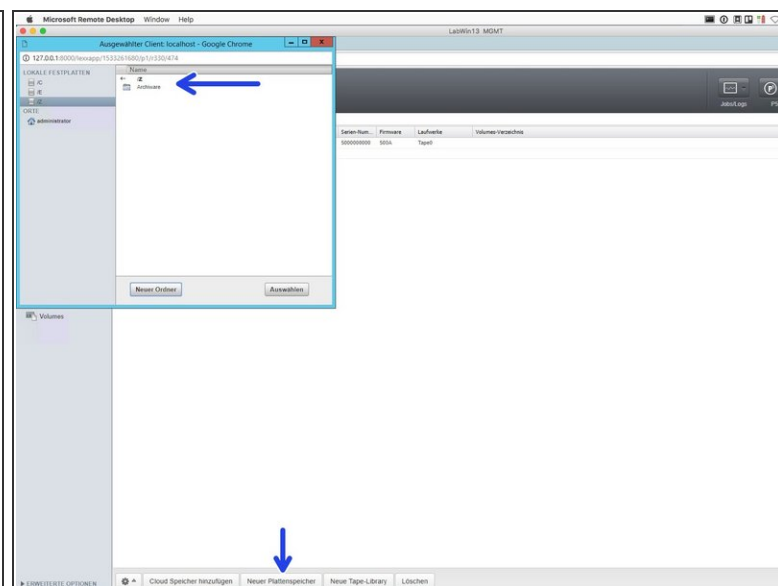
- Create a new Volume of type 'SNAS' with a parity of 3 or 2
- Create a new share with default settings and choose the previously setup 'archiware\_user' user

## Step 4 — SNAS - Archiware setup

```
PsExec.exe -i -s net use <drive> \\<ip>\<share> /persistent:yes /user:archiware_user <password>
```

**Example:**

```
PsExec.exe -i -s net use Z: \\192.168.1.1\archiware_share /persistent:yes /user:archiware_user somepassword
```



**⚠ In order to connect a NAS share with Archiware the tool PsExec.exe from Microsoft is needed**

- Mount the previously created share via PsExec.exe
- In Archiware create a new Diskstorage and choose the path your share is mounted to.
- Skip the labeling when asked.

## Step 5 — SNAS - Create mediapool

The image displays two screenshots of the 'Pool-Konfiguration: Archivpool' web interface, showing the configuration steps for creating a mediapool.

**Left Screenshot (Allgemeine Einstellungen):**

- Pool:** Archivpool
- Status:** Freigegeben
- Verwendung:** Archiv
- Medientyp:** Disk
- Laufwerke:** Nur gelistete Laufwerke werden genutzt; Laufwerkname: (empty)
- Klon-Daten:** ☐ Kopiert Daten auf einen zweiten Satz von Medien.

**Right Screenshot (Weitere Optionen):**

- Option für Einzellaufwerke:** Laufwerk mounten: Automatisch; Laufwerk auswerfen: Nie
- Volume:** Media-Block-Größe: 256 KB; Volume-Name: basiert auf Pool-Namen
- Library-Volume-Management:** Beim Beenden des Jobs: Volumes auswerfen
- Recycle-Strategie:** Der hier angegebene Zeitraum bestimmt wie lange Daten auf einem Volume und im Archivindex vorgehalten werden sollen. Das zukünftige Ablaufdatum wird bei jedem Schreibvorgang eines Volumes berechnet und gesetzt. Ein einmal gesetzter Zeitraum kann nur vergrößert nicht aber wieder verringert werden. Bereitstellung der Daten bis: (empty) Tage
- Einstellung zur Datenüberprüfung:** Prüfsummentyp: MD5
- Hinweis:** Ob und wie die Datenintegrität geprüft wird, wird im Archivplan festgelegt.

- Create a new Mediapool if needed
- Choose Mediatype 'Disk'
- Under advanced settings adjust the blocksize to 256KB

## Step 6 — SNAS - Labeling of the logical tapes

disk\_lib\_1 Disk library 1

Wählen Sie einen oder mehrere Slots.

Drive 1 - empty

Drive 2 - empty

Slot 1 - unlabeled medium

Slot 2 - unlabeled medium

Slot 3 - unlabeled medium

Slot 4 - unlabeled medium

Slot 5 - unlabeled medium

Slot 6 - unlabeled medium

Slot 7 - unlabeled medium

Slot 8 - unlabeled medium

Slot 9 - unlabeled medium

Slot 10 - unlabeled medium

Slots gefiltert nach:

Pool

Archivpool

Mögliche Ausnahmen

☒ Volume(s) mit Label überspringen

☐ Löschen o. recyclen von Volume(s)

Zeitplan

Jetzt starten: ☒

Startzeit: 10:41

Schließen

Label

- Select your new Pool and choose 'Label'
- Select all logical tapes and start the labeling process
- Your SNAS Volume is now connected and the logical Tapes can be used within Archiware.

## Step 7 — VTL - Create Tape Library

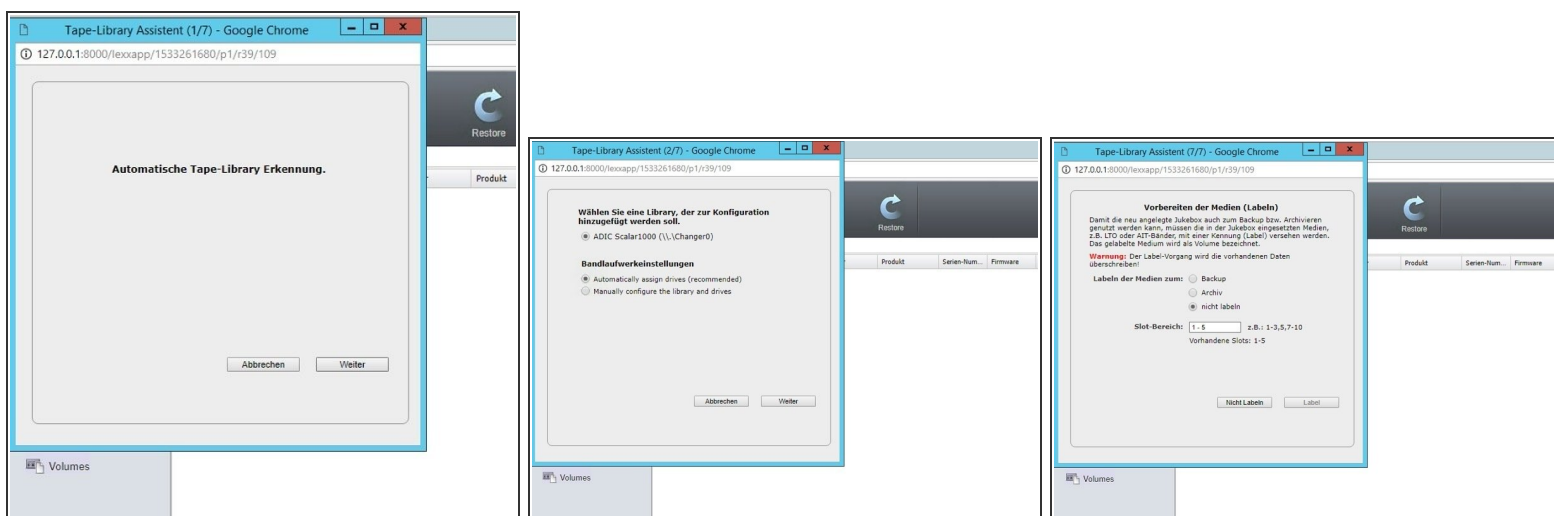
The figure consists of three sequential screenshots from a software interface. The first screenshot shows the 'Add Library' dialog box. It has fields for 'Library Name' (set to 'Archivare') and 'Description' (set to 'Type Library for Archivare'). Below these are 'Custom Revision' settings with a table listing various products like BIOS, RAID-CTL, HP, etc., each with a Product ID and Default Revision. At the bottom, there's a 'Barcode Range' section with 'Start' at 100001 and 'End' at 100022. The second screenshot shows the 'Add Drives' dialog box. It features a 'Drive Name Prefix' field set to 'IBM-Ultrastar-TDS-' and a 'Number of Drives' field set to 1. A 'Custom Revision' table lists drives such as HP Ultrium S-SCSI, IBM ULTRASTAR TDS, and QUANTUM ULTRIUM S. The third screenshot shows the 'Add SAN Client' dialog box. It includes fields for 'Protocol' (FC), 'Access' (Chap), 'Client Name' (Archivare), and 'Initiator Name' (ipn.1991-03.com:microsoft-lan-ws). It also has sections for 'User Name/Authenticated Account' and 'Target Name' (ipn.2017-03.de:fed-isp-controller-8776f6c4.archivare.archive) and 'Target IP' (10.168.0.1). All three dialogs have 'Cancel' and 'Add' buttons at the bottom right.

- In the Silent Brick System choose 'Libraries' and add a new one
- Set the Library type to 'Adic Scalar 1000'
- Add drives of type IBM
- Set up an iSCSI or FibreChannel connection

## Step 8 — VTL - Connect to your Windows host

- Switch to the Windows host of your Archiware P5 installation
- Use the iSCSI initiator or the your Fibrechannel connection to connect the Virtual Tape Library to your host.

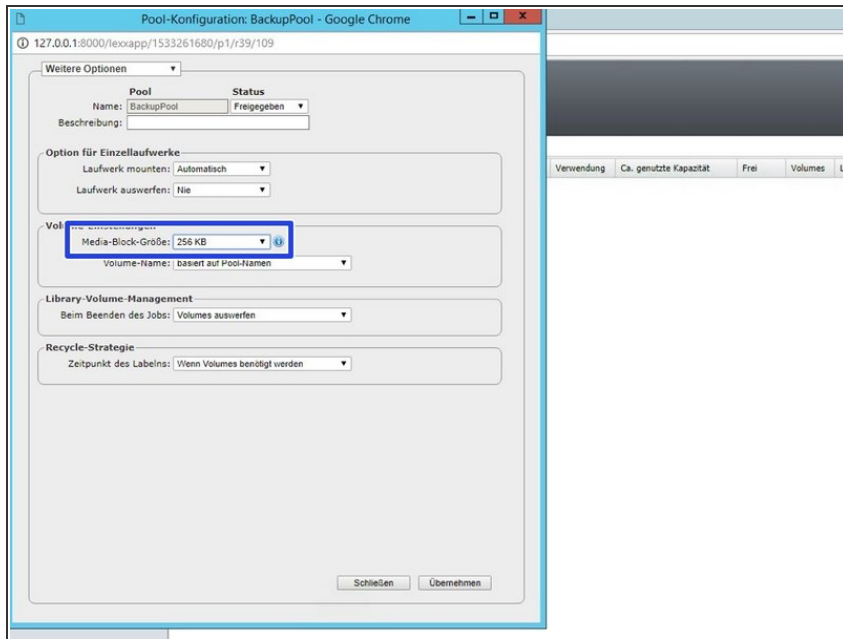
## Step 9 — VTL - Initialize Archiware



- Start the automatic tape recognition in Archiware P5.
- Choose not to label the tapes yet.

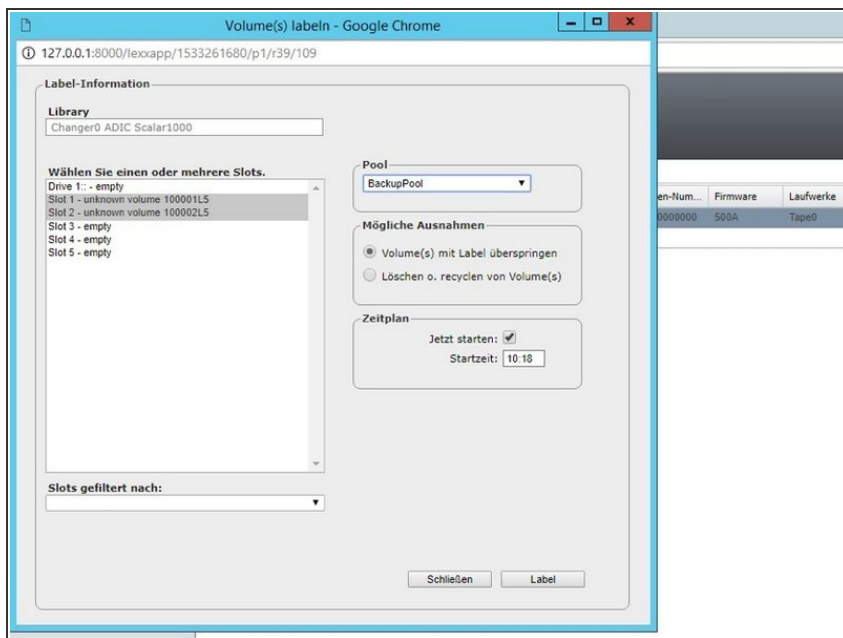


## Step 10 — VTL - Create mediapool



- Create a new mediapool.
- Set the blocksize to 256KB under advanced settings.

## Step 11 — VTL - Labeling of the media



- Choose your newly created mediapool
- Choose 'label' in order to start the labeling of the tapes
- Select the free tapes and choose label.
- Your library is now fully useable.