



SB Connectivity KGS Software

This manual is for connecting the software KGS Content Server for ArchiveLink

Written By: Rene Weber



INTRODUCTION

This manual is for connecting the software KGS Content Server for ArchiveLink.

This guide is tested with the Silent Brick WORM Archive Version 2.15

Step 1 — General Information



⚠ Requirements Compliance Option is necessary to enable various WORM volume types.

ℹ Installation and Connectors Installation and electrical connection as well as network connection are to be done as described in the manual Installation

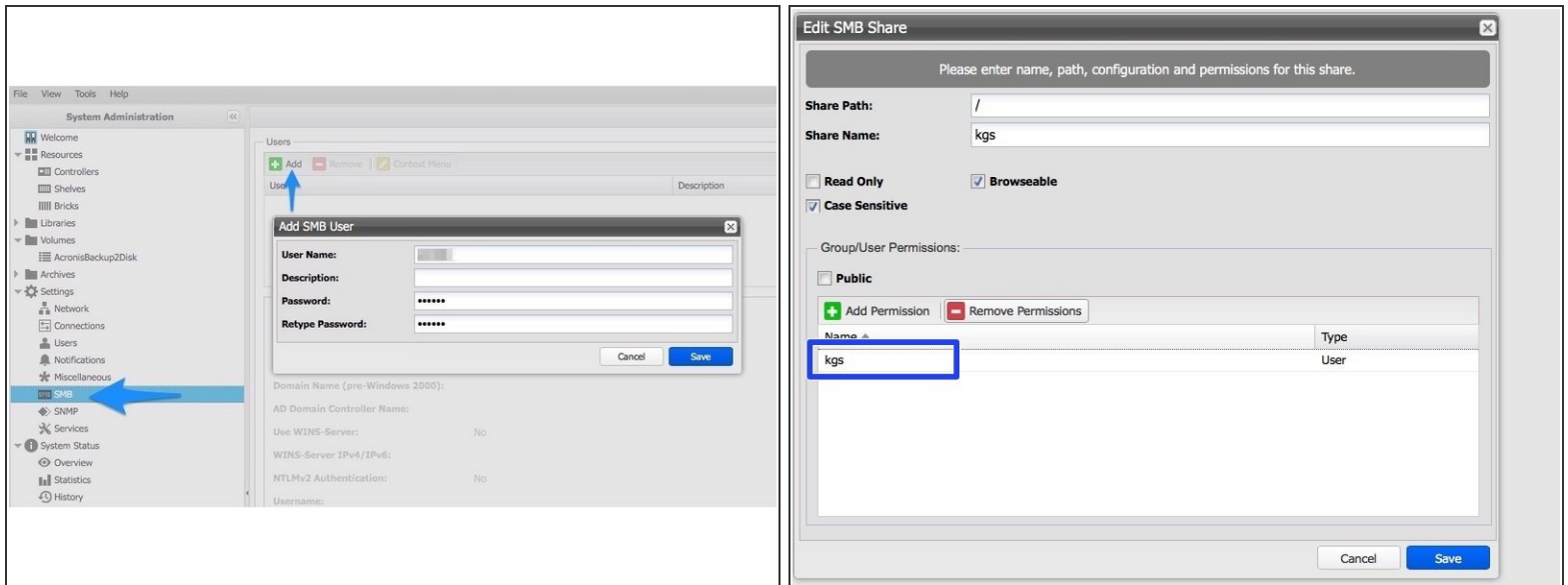
ℹ Network Adjustments The network settings are to be adjusted as described in the manual Installation

Step 2 — Volume Settings

The image displays two screenshots of the 'Add Sub Volume' dialog box. The left screenshot shows the 'Name', 'Description', 'Volume type' (set to 'WORM with retention (RWRO triggered, autosave)'), and 'Automatic archive after [s]' (set to 60) fields. The retention period is set to 0 years, 0 days, 0 hours, and 0 minutes, which is highlighted with a red box. The right screenshot shows the 'Miscellaneous' tab with the 'Do not archive 0-byte files' option checked, highlighted with a green box.

- Create an archive including WORM and Stage Brick
- Create a sub-volume of type WORM with Retention (RWRO triggered, autosave).
- The retention period should be defined as desired. It acts as a fallback since it will be set on file level by KGS.
- Select the option 'Do not archive 0-byte files'

Step 3 — Share Settings



- Create the KGS service user under SMB with the same password as defined by KGS
- Add an SMB share to the created volume with access rights for the KGS service user

Step 4 — Connect KGS

- Please get in touch with KGS for setting up the connection with Content Server for ArchiveLink