



# SB Connectivity Veeam - Repository

This manual shows the instruction for connecting the Silent Brick System with Veeam as a NAS Repository

Written By: Rene Weber

The Veeam Ready logo, featuring the word 'veeam' in green and 'READY' in white, set against a dark teal background.

# veeam READY



## Repository

# INTRODUCTION

This manual shows the instruction for connecting the Silent Brick System with Veeam as a NAS Repository.

This guide is tested with Veeam 11 and the Silent Brick System Version 2.39

Veeam Knowledge Base Articles

<https://www.veeam.com/kb2802>

## Step 1 — General Information

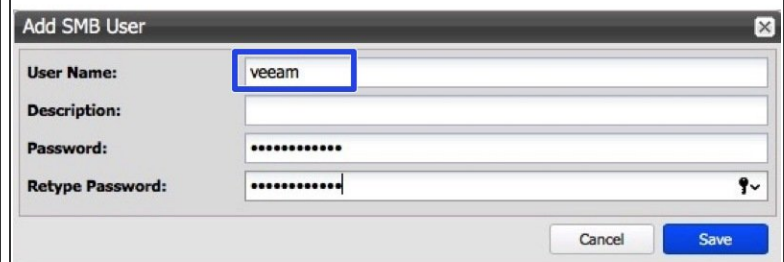


### **Installation and Connectors**

Installation and electrical connection as well as network connection are to be done as described in the manual Installation

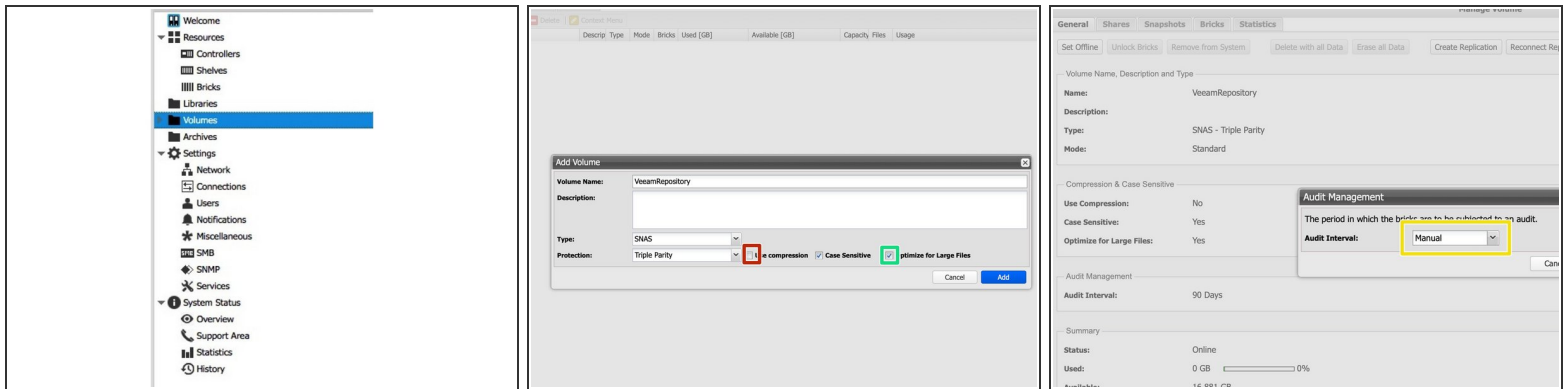
### **Network Adjustments** The network settings are to be adjusted as described in the manual Installation

## Step 2 — SNAS - User setup



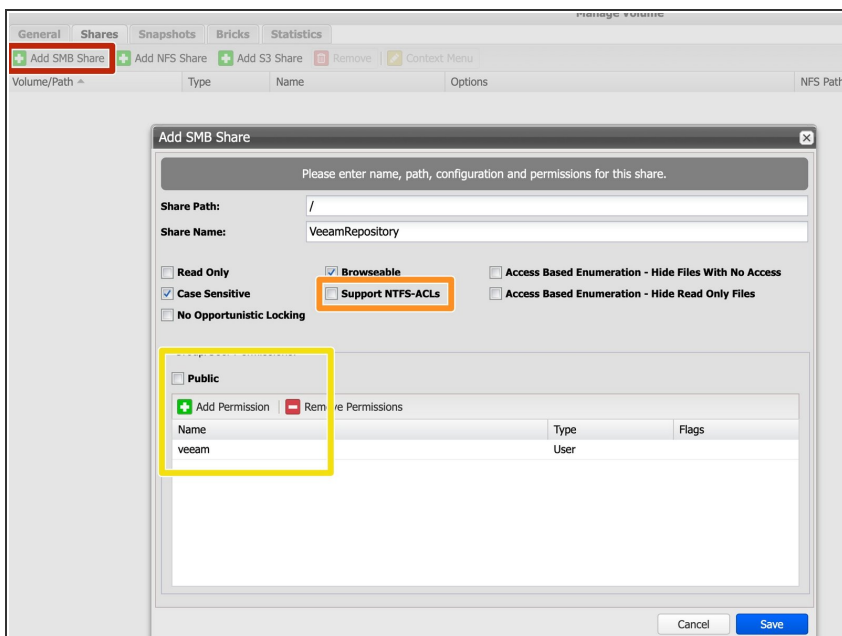
- Connect to the Silent Brick Web Interface
- Switch to Settings -> SMB
- Create a new veeam user with a proper password or join the system to your active directory

## Step 3 — SNAS - Volume Setup



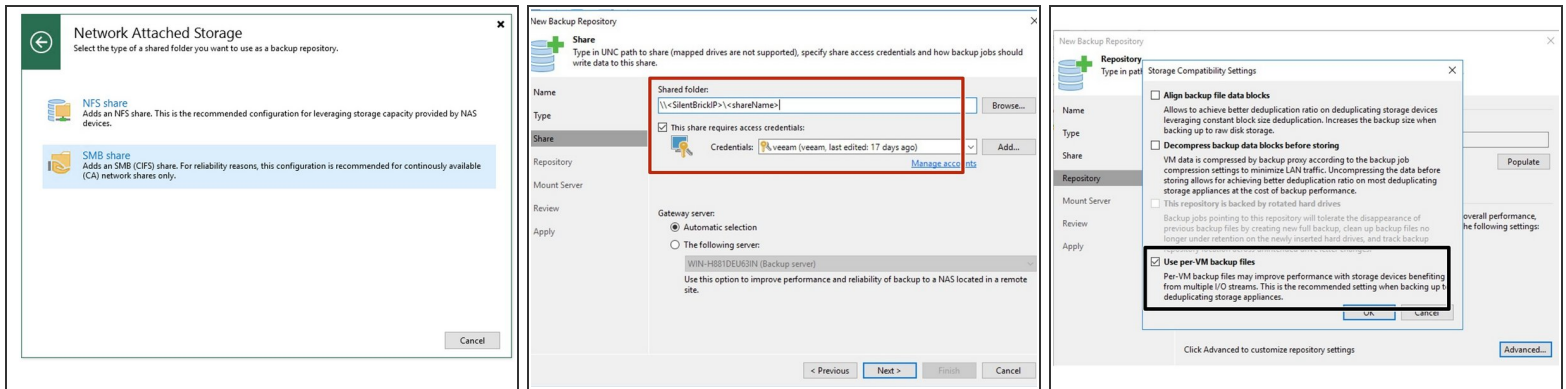
- Create a new Volume of type 'SNAS' with a parity of 3 or 2
- Compression is not needed for Veeam Backups
- Enable Large-File Optimization
- ❗ For higher redundancy a parity level of 3 is recommended
- If backup files are overwritten on a regular basis you may consider to set the Audit interval to manual. Automatic auditing is useful if data resides on the Volume for a long period of time.

## Step 4 — SNAS - SMB Share setup



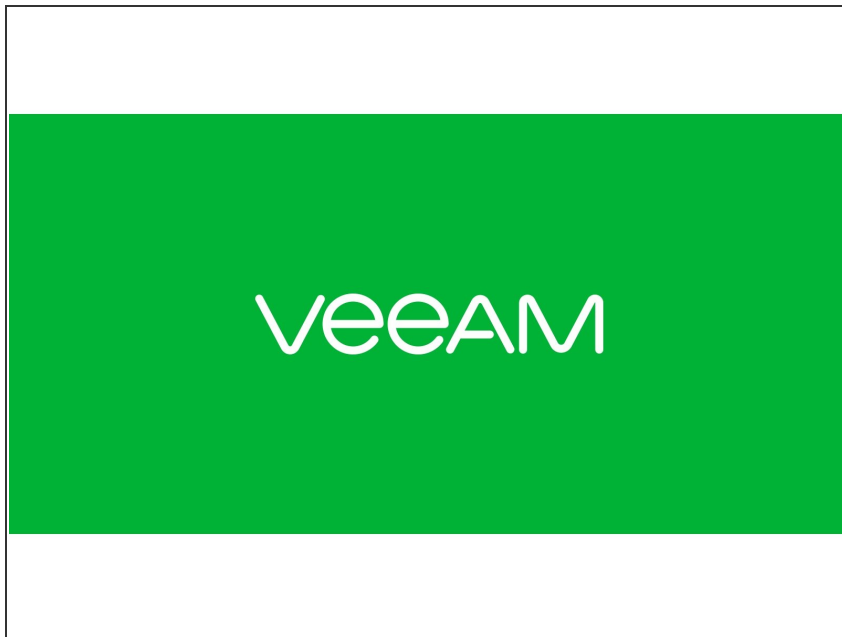
- In your volume navigate to the Shares section
- Choose "Add SMB Share"
- Uncheck the checkbox for NTFS-ACLs to speed up the share
- Uncheck the checkbox for Public and add the previously added Veeam user

## Step 5 — SNAS - Veeam setup



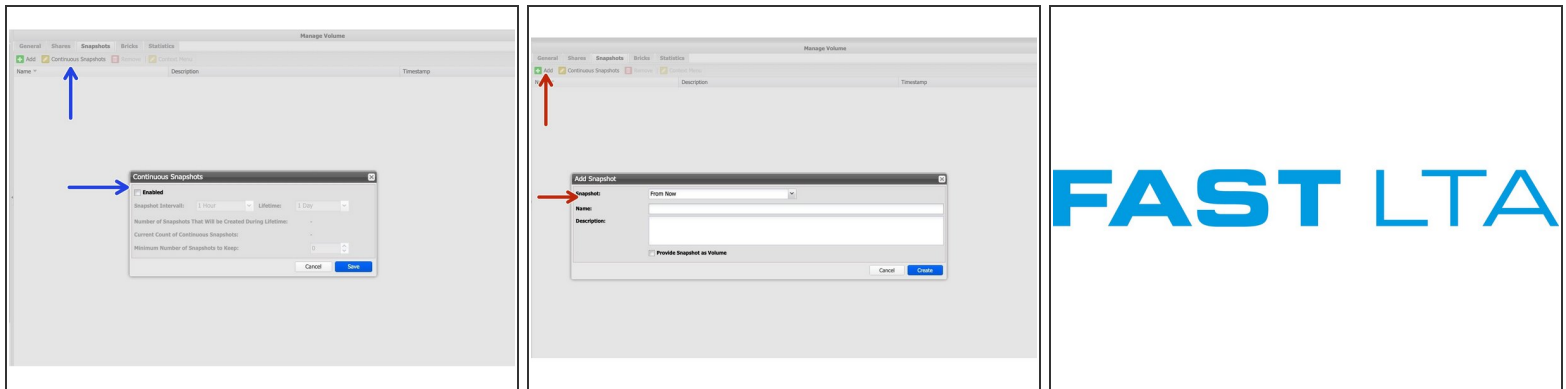
- Add a new repository of type 'Network attached Folder' - 'SMB Share'
- Add the full path to the Silent Brick share
- Add the credentials previously configured for the share
- ❗ Recommended setting in Advanced: Use per-VM Backup

## Step 6 — Veeam - Define your Backup Job






- Refer to the Veeam manual for the Backup Job creation

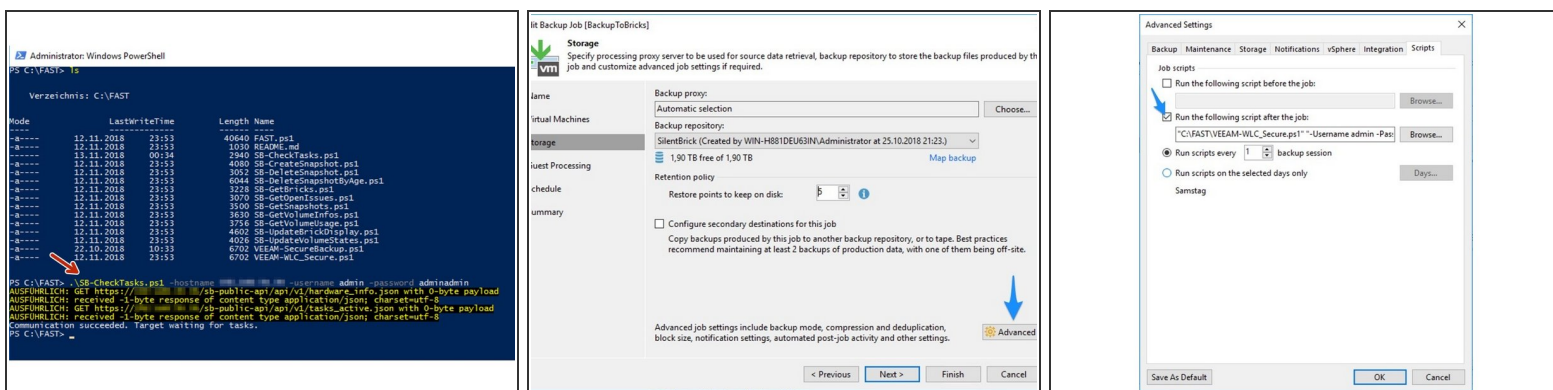
## Step 7 — Optional: Continuous Snapshot security



**FAST LTA**

-  In order to increase overall security snapshots may be added to the SecureNAS Volume after backup creation
-  A recommendation is to define the Snapshot period to the Veeam retention period +1 day
-  For backup file integrity, make sure to set the interval to a proper value to make sure that at least one snapshot hits a time where no Backup Job was running.
- Snapshots may be added in three ways
  - Automatically via the Silent Brick User Interface
  - Manually via the Silent Brick User Interface
  - Via API Call to the Silent Brick System

## Step 8 — Optional: REST-API Snapshot creation



**⚠ Powershell Version >= 5 required**

**⚠ In order to add an API Call the Silent Brick Systems Management Interface must be reachable by the Veeam Host**

- Download the Windows scripts folder from <https://github.com/fastlta/sb-public/tree...>
- Deploy the scripts to a folder of your choice ( here C:\FAST )
- Verify the connection by execution of the SB-CheckTasks.ps1 script in a Powershell screen
- Modify your repository settings to make use of the Veeam-WLC Script
- **i** Run Veeam-WLC Script.ps1 manually in order to get a list of available parameters