



SB Connectivity PoINT Storage Manager

This guide gives a step by step introduction to connecting the FAST LTA Silent Brick WORM Archive to the PoINT Storage Manager.

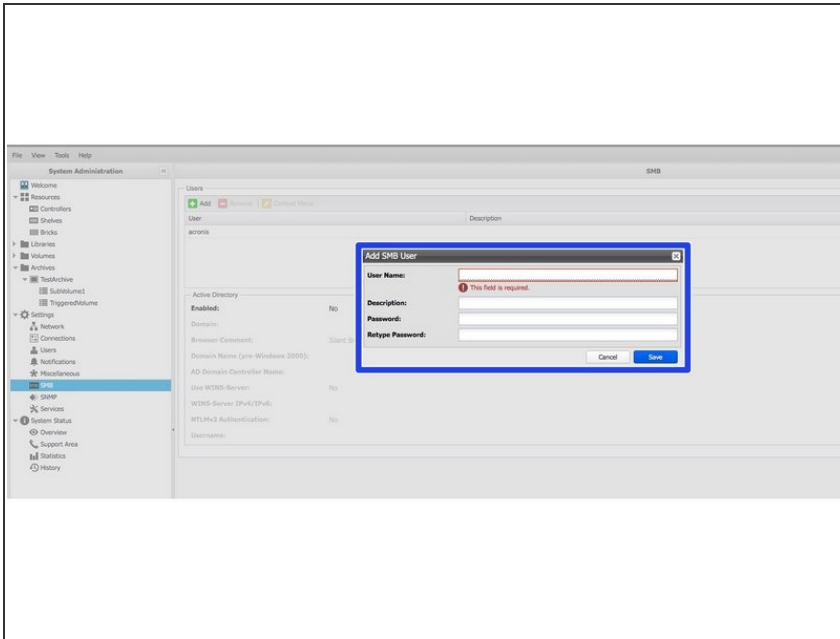
Written By: Rene Weber



INTRODUCTION

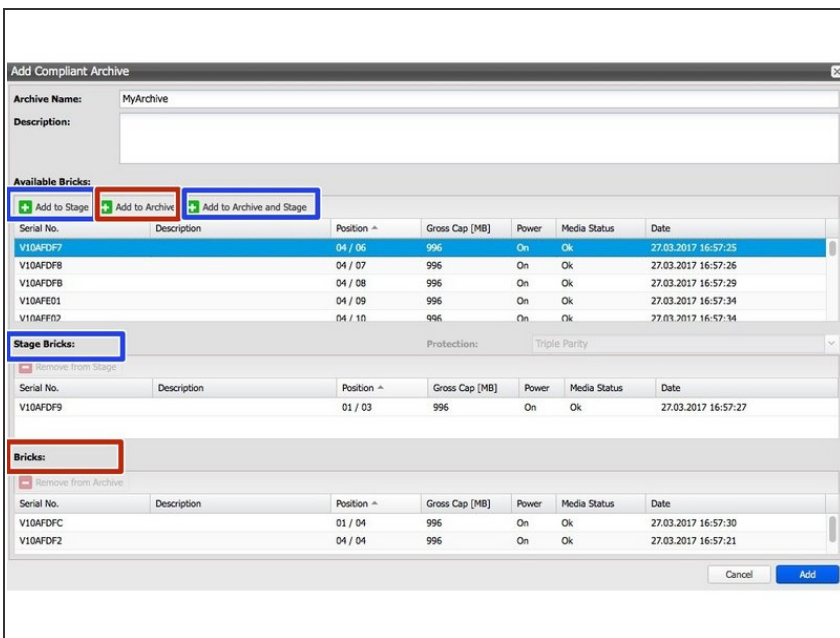
This guide gives a step by step introduction to connecting the FAST LTA Silent Brick WORM Archive in Version 2.20.0.6 to the PoINT Storage Manager in Version 6.3.

Step 1 — Create SMB user



- Go to Preferences -> SMB
- Configure Active Directory or add new local user

Step 2 — Create Compliant Archive



- Assign at least one Brick to the Stage Bricks. Brick may be
 - Standard Brick
 - FLASH Brick
 - WORM Brick. Will be partitioned. Size as needed. Default: 1TB
- Add one or more Bricks to the Archive

Step 3 — Create subvolume

The 'Add Sub Volume' dialog box is shown. The 'Volume type' dropdown is set to 'WORM with retention (RWRO triggered)'. The retention settings are set to 10 years, 0 days, 0 hours, and 0 minutes. The 'List' checkbox is checked. The 'File extension' is set to 'safe' and the 'File format' is set to 'xml'.

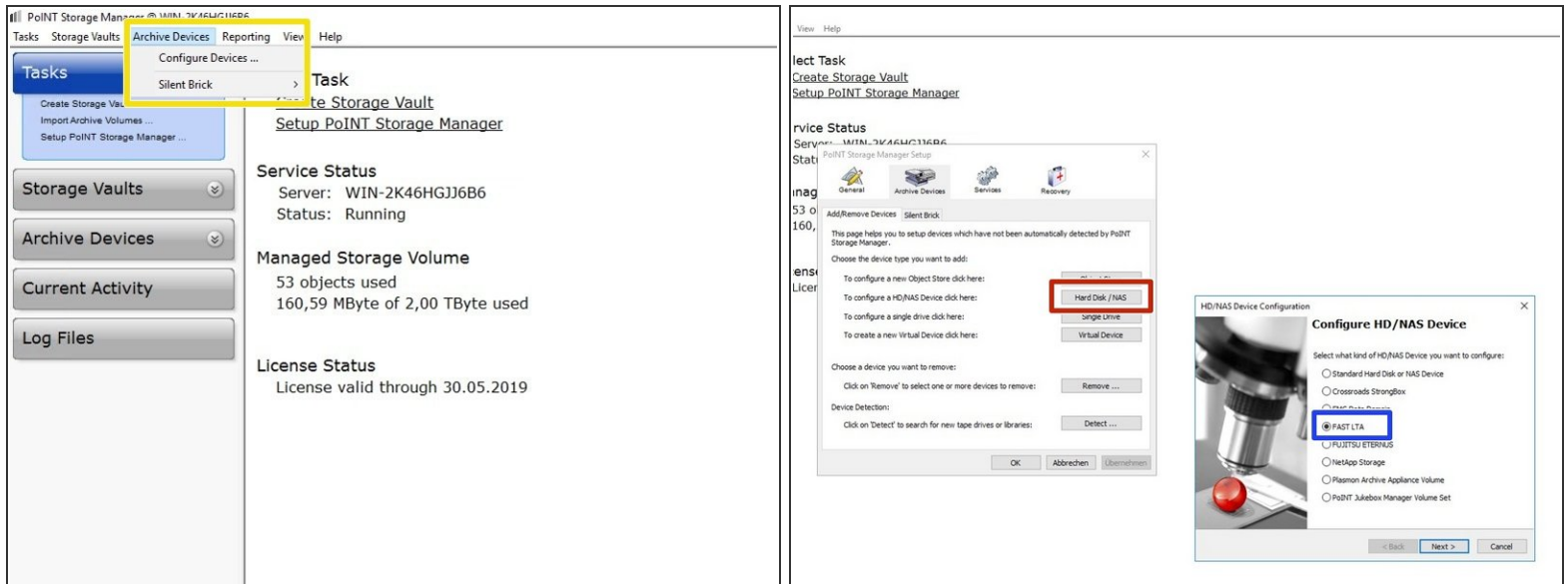
- Volume Type: WORM with Retention (RWRO)
- Set retention to a default (here 10 y)
- Enable listing of Safefiles

Step 4 — Create share

The 'Add SMB Share' dialog box is shown. The 'Share Path' is set to '/'. The 'Share Name' is set to 'TestArchive-SubVolume1'. The 'Browseable' checkbox is checked. The 'Public' checkbox is checked. The 'Add Permission' button is highlighted.

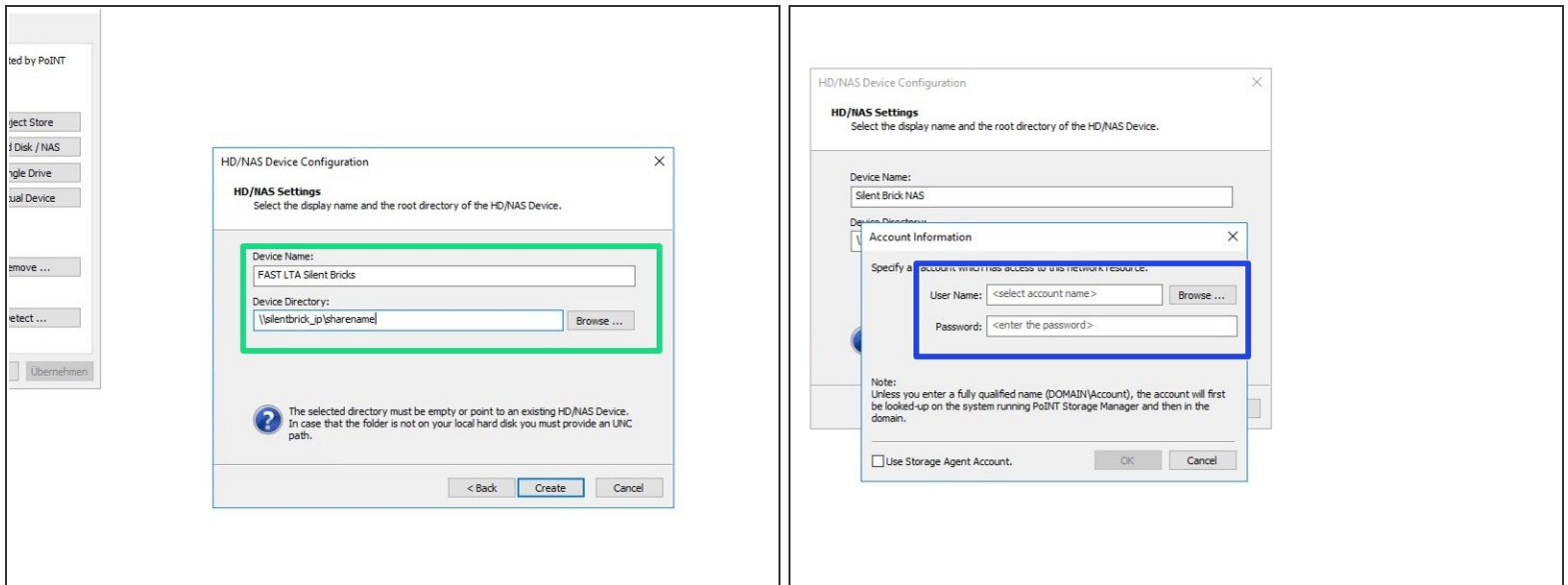
- To create a SMB Share click 'Add SMB Share'
- Share path: /
- Share name: as desired

Step 5 — Setup PoINT



- Choose Configure Devices under "Archive Devices"
- Add new archival Storage by clicking on "Hard Disk / NAS"
- Choose type FAST LTA
- Enter Name and Share path previously defined on the Silent Brick System
- ① Sharepath is a combination of archive name and share name. See Silent Brick UI for details.

Step 6 — Connect PoINT



- Enter Name and Share path previously defined on the Silent Brick System
 - ❗ Sharepath is a combination of archive name and share name. See Silent Brick UI for details.
- Choose user as defined on the Silent Brick System previously.
 - ❗ It may be necessary to create a local user account.