



SB Connectivity Veeam - Scale-Out Repository

This manual shows the instruction for connecting the Silent Brick System with Veeam as a Scale-Out NAS Repository

Written By: Rene Weber

The Veeam Ready logo, featuring the word 'veeam' in green and 'READY' in white, set against a dark teal background.

veeam
READY



Repository

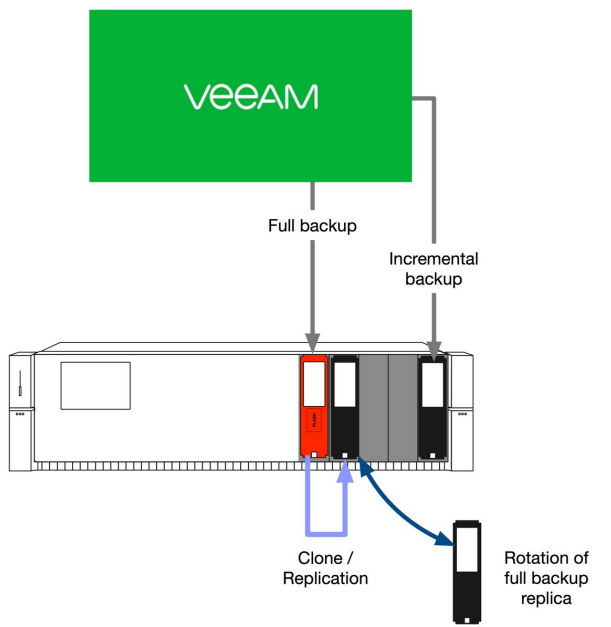
INTRODUCTION

This manual shows the instruction for connecting the Silent Brick System with Veeam as a scale-out NAS repository.

By the configuration of the scale-out repository functionality veeam supports a dual target backup with one device for full backups and one device for incremental backups.

This guide is tested with Veeam 11 and the Silent Brick System Version 2.39

Step 1 — General Information



i Installation and Connectors

Installation and electrical connection as well as network connection are to be done as described in the manual Installation

i Network Adjustments

The network settings are to be adjusted as described in the manual Installation

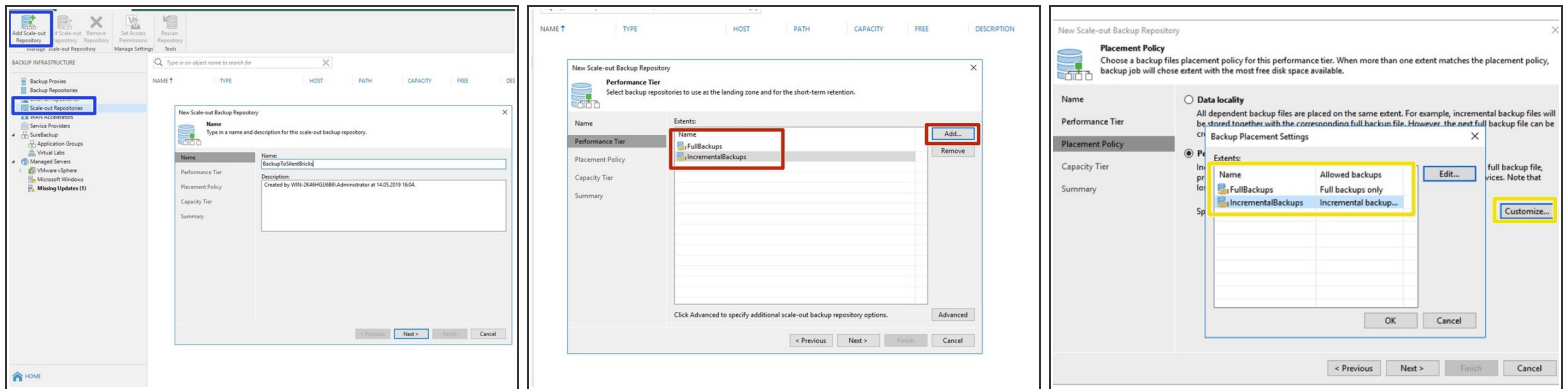
- Using the scale-out functionality gives you the possibility to separate full and incremental backup media. Physical, in matter of performance and size.
- The separate full backup media may be replicated or clone for offsite redundancy

⚠ Cloning is recommended for offsite storage

Step 2 — SNAS - Setup

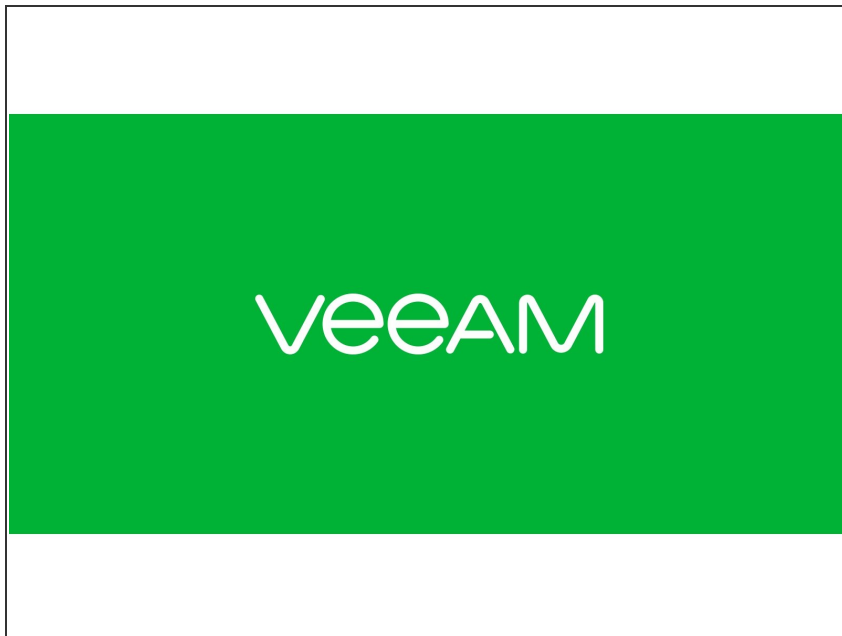
- Follow [the SB Connectivity - Repository Guide](#) in order to create to Volumes and Veeam Repositories. One for the Full Backups, one for the increments. Do not create any Backup Jobs yet.

Step 3 — SNAS - Veeam setup scale-out repository



- Create a new scale-out repository
- Add the previously create repositories to the performance tier
- Under placement policy define the backup types matching your volumes

Step 4 — Veeam - Define your Backup Job



- Refer to the Veeam manual for the Backup Job creation

Step 5 — Optional: Snapshot security



- ① In order to increase overall security snapshots may be added to the SecureNAS Volume after backup creation
- Snapshots may be added in two ways
 - Manually via the Silent Brick User Interface
 - Via API Call to the Silent Brick System
- Refer to the [Guide: SB Connectivity Veeam - Repository](#)