



SB Connectivity Commvault Backup & Recovery | WORM Archive

This guide describes the necessary steps to setup up the Silent Brick System as a Commvault Backup & Recovery WORM Archive

Written By: Rene Weber

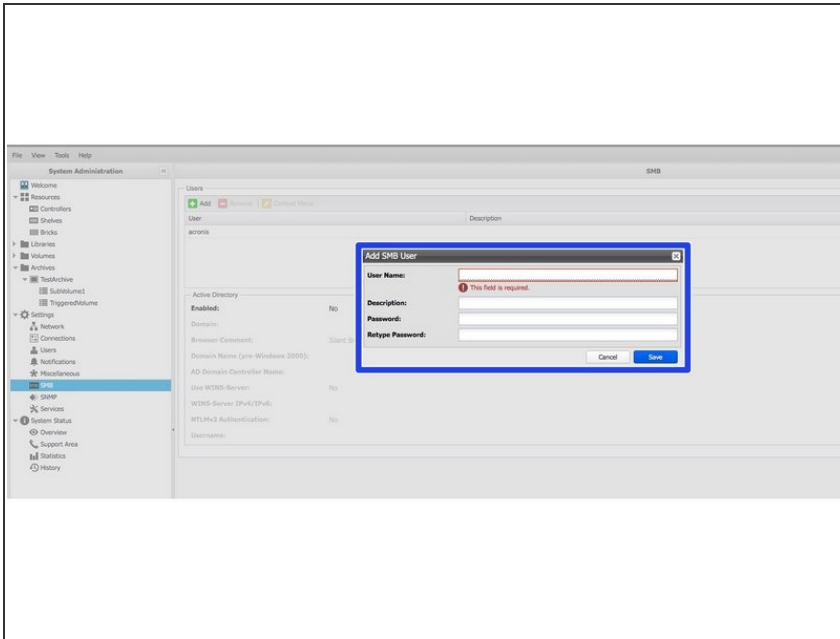


COMMVAULT®

INTRODUCTION

This guide describes the necessary steps to setup up the Silent Brick System as a Commvault Backup & Recovery WORM Archive

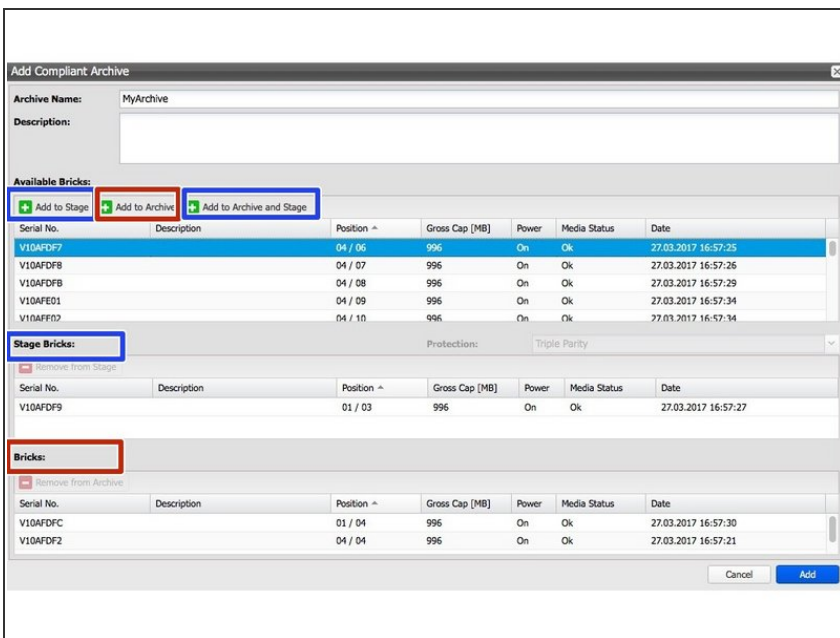
Step 1 — Create SMB user



⚠ This is only needed if your archive will be connected via SMB/CIFS

- Go to Preferences -> SMB
- Configure Active Directory or add new local user

Step 2 — Create Compliant Archive



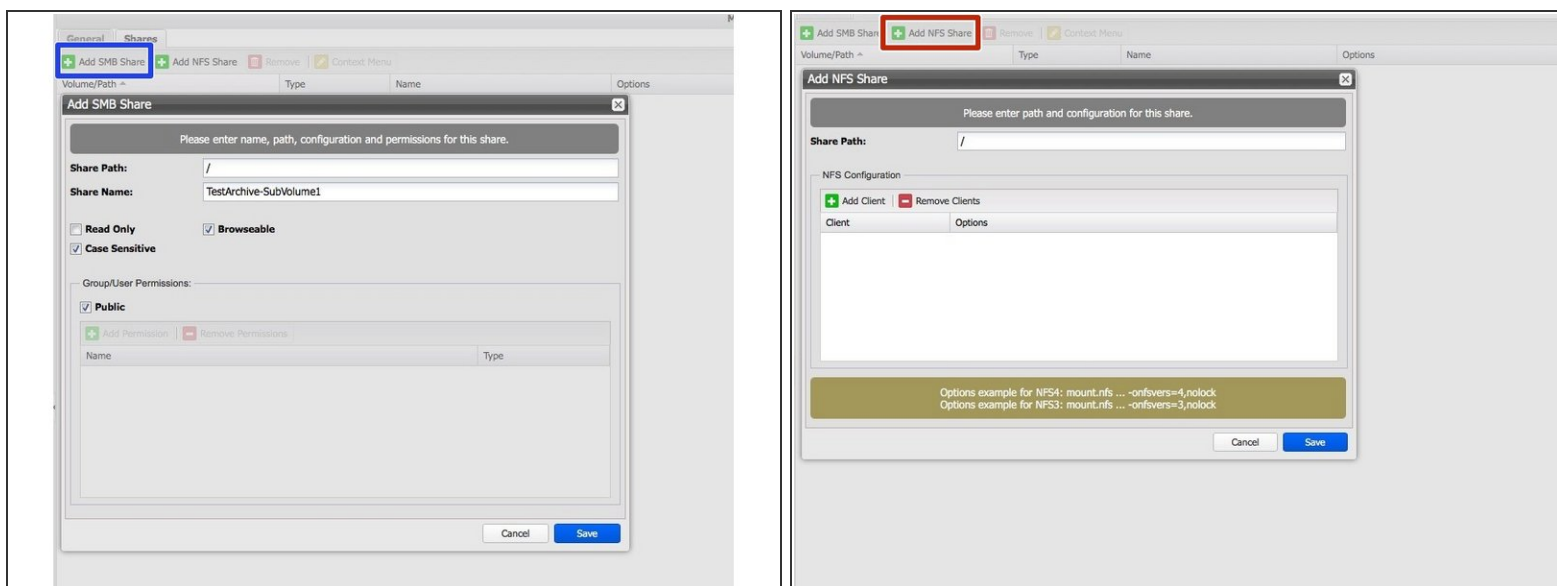
- Assign at least one Brick to the Stage Bricks. Brick may be
 - Standard Brick
 - FLASH Brick
 - WORM Brick. Will be partitioned. Size as needed. Default: 1TB
- Add one or more Bricks to the Archive

Step 3 — Create subvolume

The screenshot shows the 'Add Sub Volume' dialog box. The 'Add' button in the top left is highlighted with a yellow box. The 'Name' field is highlighted with a blue box. The 'Volume type' dropdown is highlighted with a red box and set to 'WORM with retention'. The retention settings (Years: 0, Days: 1, Hours: 0, Minutes: 0) are highlighted with a green box. The 'Method' is set to 'Immediate' and 'Minimum age before archiving [s]' is set to 60. There is a checkbox for 'Mark archived files read only' which is unchecked. 'Cancel' and 'Add' buttons are at the bottom right.

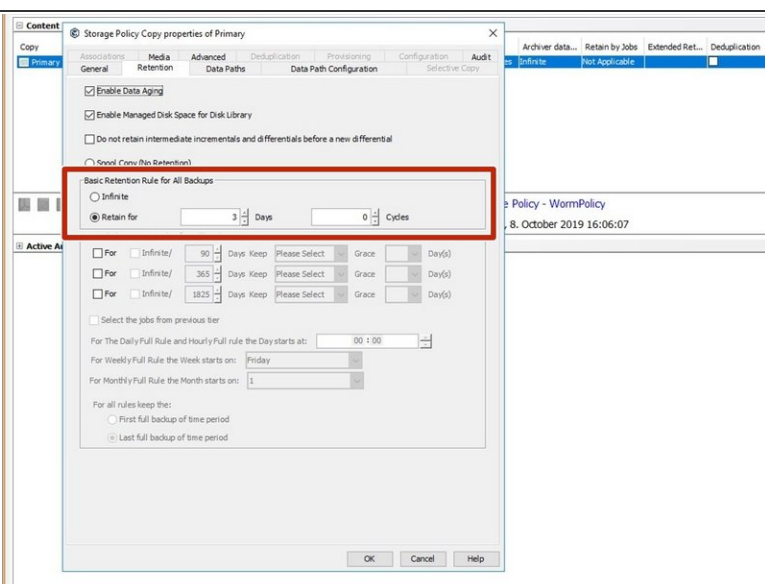
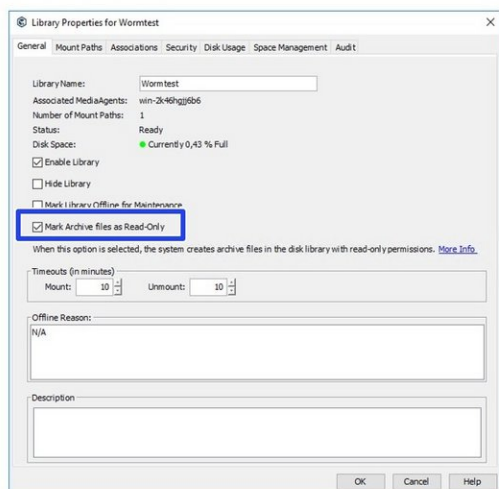
- Choose 'add' under 'Sub Volumes' Tab of your archive
- Volume Name: Commvault
- Volume Type: WORM with Retention (RWRO Trigger)
- Retention: Set up a default retention. Commvault will set its own retention on file level.

Step 4 — Create share



- To create a SMB Share click 'Add SMB Share'
 - Share path: /
 - Share name: commvault_worm
 - Other settings: Uncheck "Public" and add the user create in step 1

Step 5 — Connect archival software



- Create a Library using the UNC path created before.
- Enable the "Mark Archive files as Read-Only" setting.
- Define a new Policy for your library including your desired retention.