



SB Connectivity Veeam - S3 Capacity Tier

This manual shows the instruction for connecting the Silent Brick System with Veeam as a S3 Object Store

Written By: Rene Weber



INTRODUCTION

This manual shows the instruction for connecting the Silent Brick System with Veeam as a S3 Object Store under a Scale-Out backup repository.

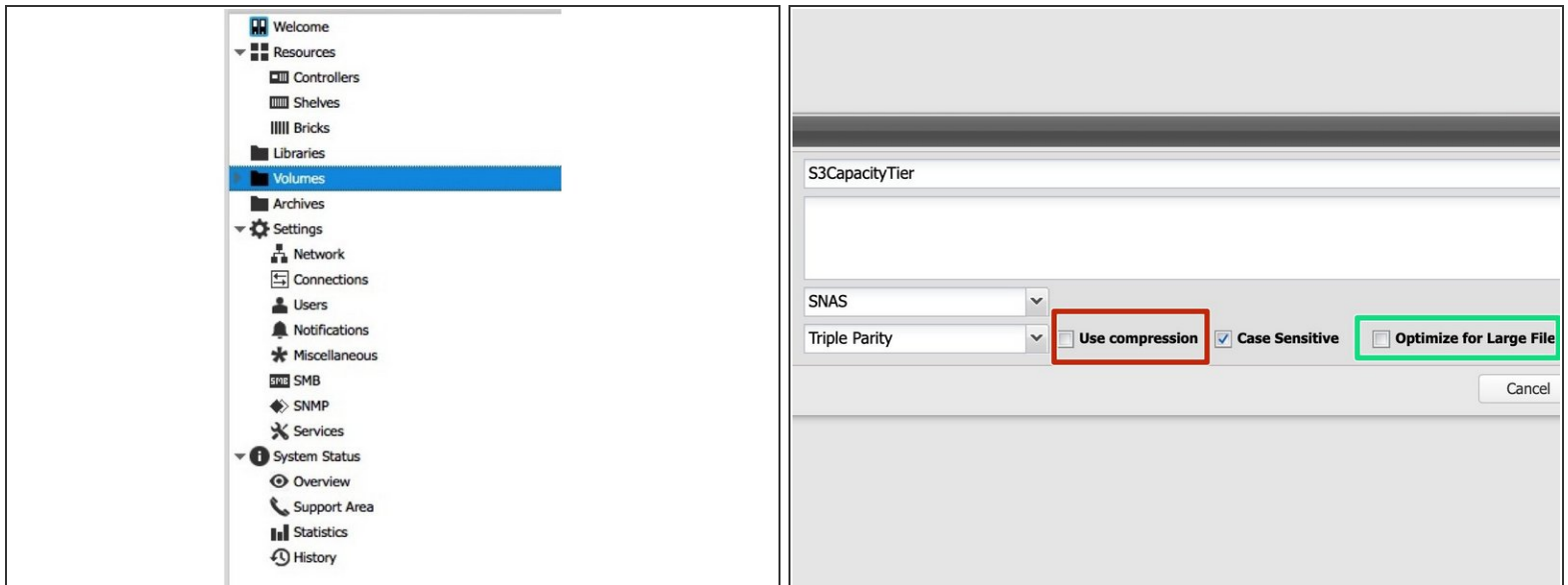
This guide is tested with Veeam 11 and the Silent Brick System Version 2.39

Step 1 — General Information

The image shows the Veeam logo, which consists of the word "VEEAM" in white, uppercase, sans-serif font, centered on a solid green rectangular background.

- i Installation and Connectors**
Installation and electrical connection as well as network connection are to be done as described in the manual Installation
- i Network Adjustments** The network settings are to be adjusted as described in the manual Installation

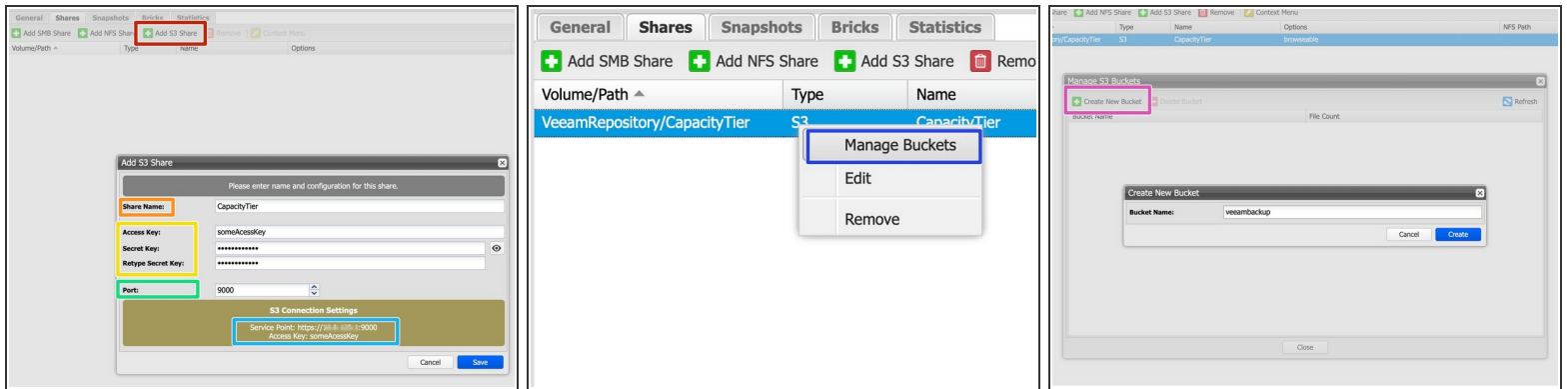
Step 2 — SNAS - Volume Setup



⚠ The settings of this volume differ from settings for a Backup to disk repository which uses Large File Optimization and probably no Audit.

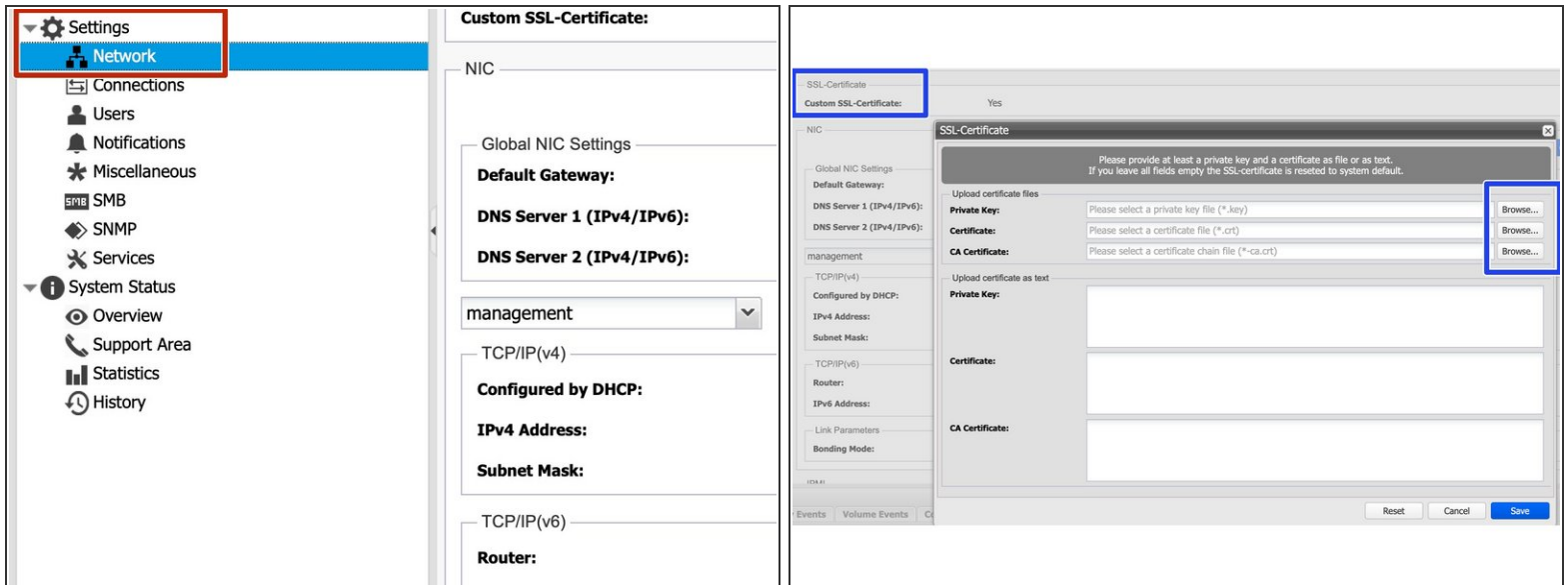
- Create a new Volume of type 'SNAS' with a parity of 3 or 2
 - Compression is not needed for the capacity tier
 - Disable Large File Optimization
- ❗ For higher redundancy a parity level of 3 is recommended

Step 3 — SNAS - S3 Share setup



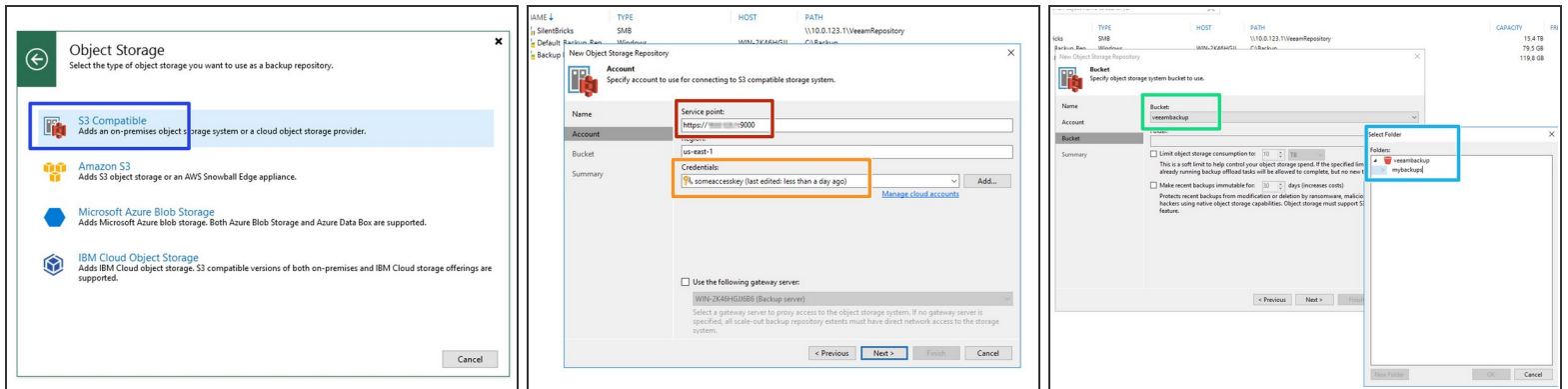
- In your volume navigate to the Shares section
- Choose "Add S3 Share"
- Enter a Share Name
- Enter credentials for accessing the S3 layer
- The Port will be automatically increased for each new S3 instance
- Write down the Access Point URL.
- Right-Click on the S3 Share and choose "Manage Buckets"
- Create a new Bucket for use with Veeam

Step 4 — Optional: Add custom Certificates



- Since S3 communicates via HTTPs, certificates are being used. In order to update the SSL certificate of the Silent Brick System proceed as follows:
 - Navigate to Settings -> Network
 - Select "Edit" for "Custom SSL Certificate" and upload your own certificates.
- ❗ Certificates may be generated manually or via services like [Lets Encrypt](#)
- ❗ Supported certificate types are SSL certificates including the private key and the signing certificate authority.
- ⚠ Certificates with passphrase are not supported.

Step 5 — SNAS - Veeam setup



- Add a new repository of type 'Object Storage' - 'S3 Compatible'
- Enter the Service Point URL previously noted
- Enter the credentials as defined for the S3 Share
- Select the previously created bucket
- Add a folder to the bucket

Step 6 — Veeam - Add to the Scale-Out Backup repository

New Scale-out Backup Repository

Capacity Tier
Specify object storage to copy backups to for redundancy and DR purposes. Older backups can be moved to object storage completely to reduce long-term retention costs while preserving the ability to restore directly from offloaded backups.

Name

Performance Tier

Placement Policy

Capacity Tier

Summary

☒ Extend scale-out backup repository capacity with object storage:

BackupToBrick Add...

Define time windows when uploading to object storage is allowed Window...

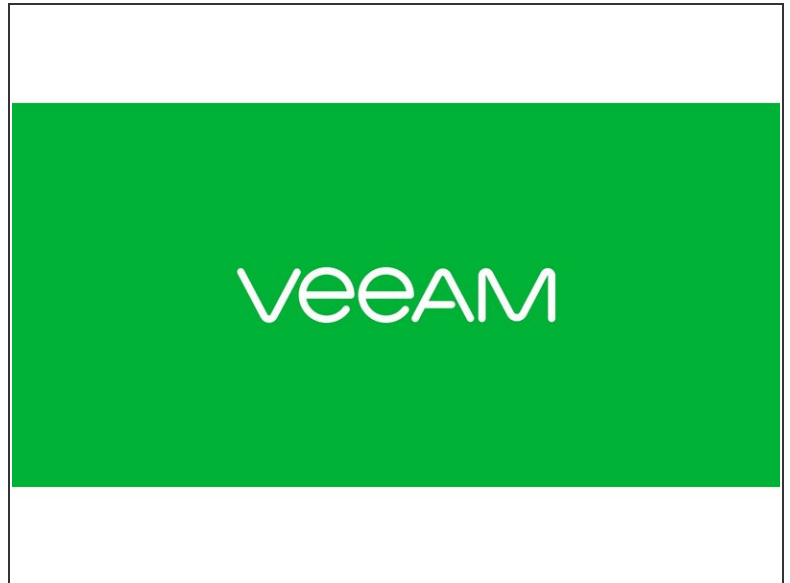
☐ Copy backups to object storage as soon as they are created
Create additional copy of your backups for added redundancy by having all backups copied to the capacity tier as soon as they are created on the performance tier.

☒ Move backups to object storage as they age out of the operational restore window
Reduce your long-term retention costs by moving older backups to object storage completely while preserving the ability to restore directly from offloaded backups.

Move backup files older than 14 days (your operational restore window) Override...

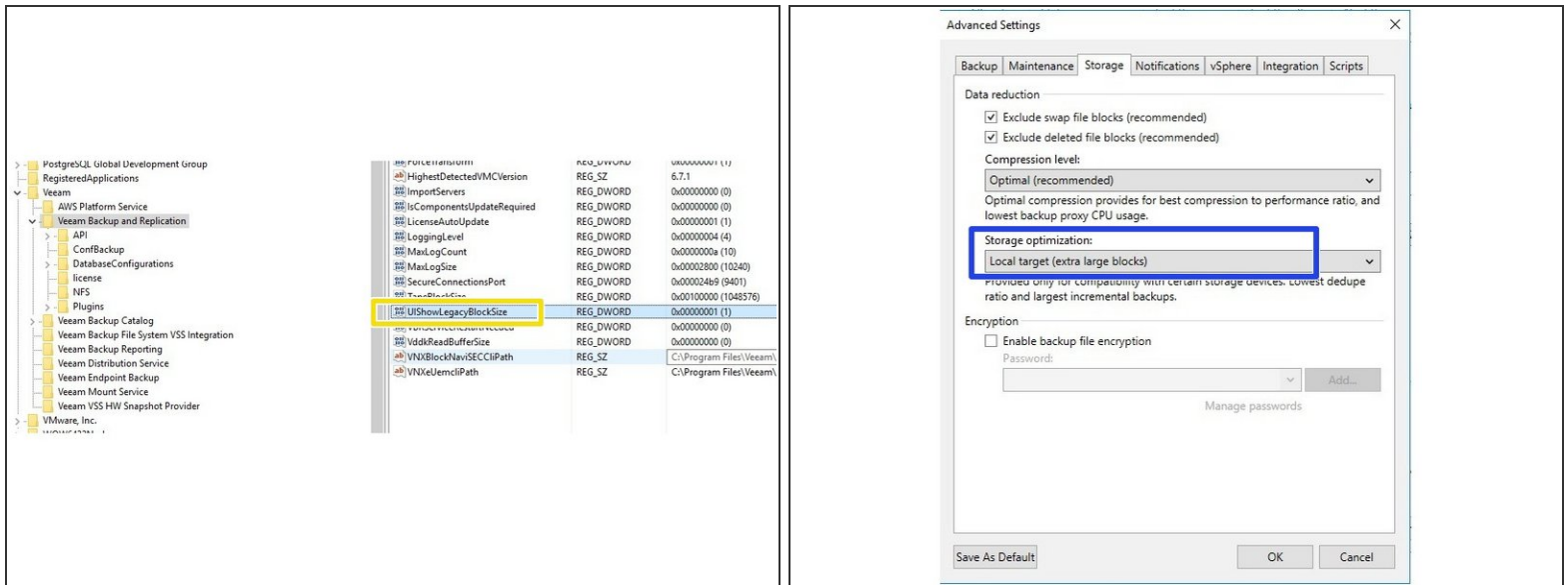
☐ Encrypt data uploaded to object storage
Password: Add...
Manage passwords

< Previous Apply Finish Cancel



- Edit your [existing Scale-Out Backup repository](#) and add the new Object Store as capacity tier.
- You Object Store on a Brick is now being used in your Veeam SOBR.
- ❗ Retention for data in the capacity tier depends on the Backup Job Retention
- ❗ Choose "Copy" to create instant redundancy of your data
- ❗ Choose "Move" to free up disk space in the performance tier by moving data to the capacity tier after time.
- ❗ Both is combinable
- ☑ If you want to archive data in the capacity tier use "Move" in the SOBR and the GFS setting along with a proper retention in your backup job configuration.

Step 7 — Performance tuning - Silent Brick DS

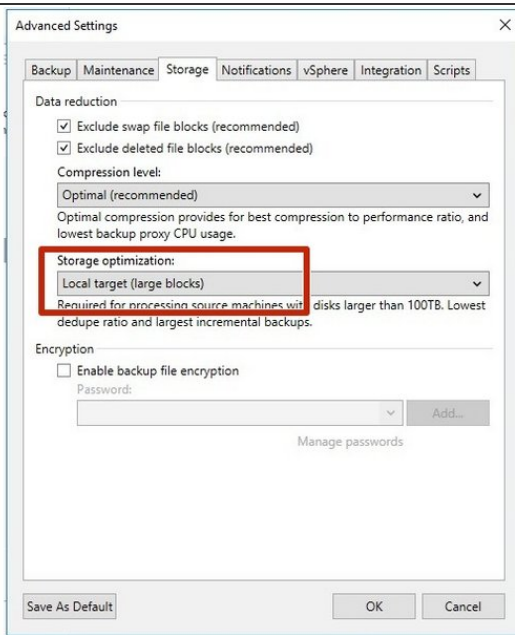


i Per Default VEEAM write quite small objects which can influence the performance especially on spinning disks. Therefore increasing the Object Size can result in a higher Performance.

✓ Increasing the Object size will result in bigger incremental backups

- To make this option visible, create the UShowLegacyBlockSize (DWORD, 1) registry value under the 'HKLM\SOFTWARE\Veeam\Veeam Backup and Replication' key on the backup server. Keep in mind that this option significantly increases incremental backups size and requires an active full backup to be activated.
- Modify your Backup Job to use Extra Large Object Sizes
- Run an active full backup

Step 8 — Performance Tuning - Silent Brick FLASH



i Per Default VEEAM write quite small objects which can influence the performance especially on spinning disks. Therefore increasing the Object Size can result in a higher Performance.

- ✓** Increasing the Object size will result in bigger incremental backups
- Modify your Backup Job to use Local Target (Large Blocks)
- Run an active full backup