



SVHT - H1000, H1000 Pro, C4 2022 Mount Rail Set

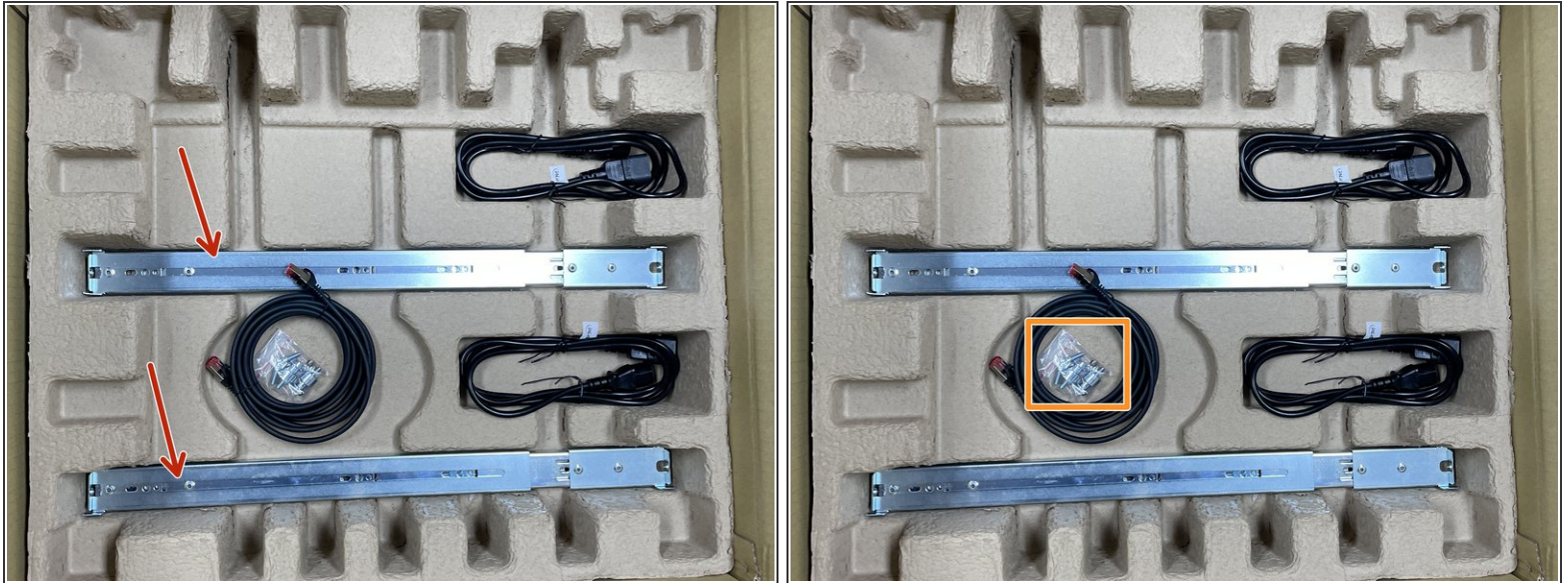
Written By: Thomas Kunath



Technical instructions

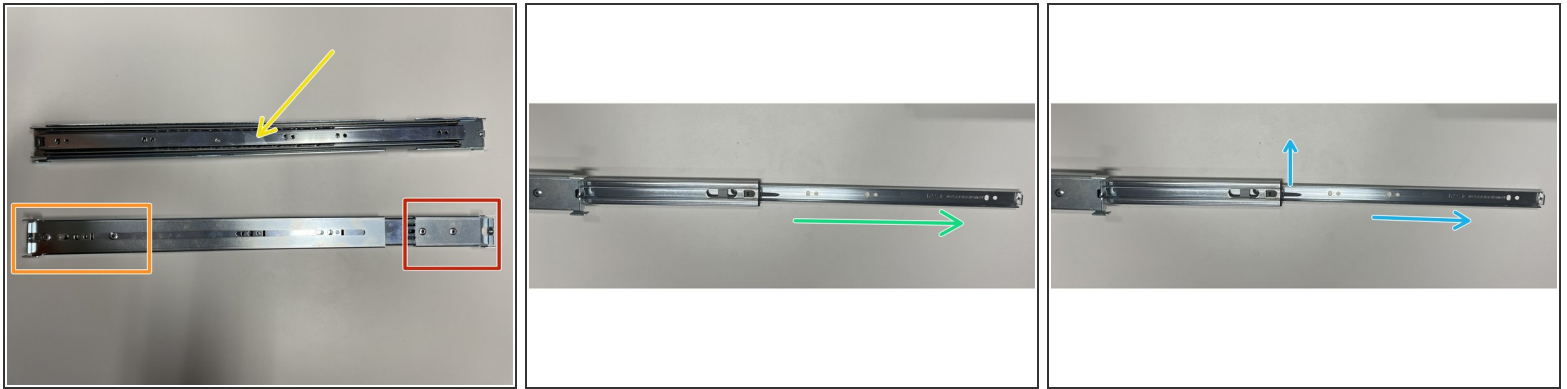
Technische Anleitung

Step 1 — What's in the box



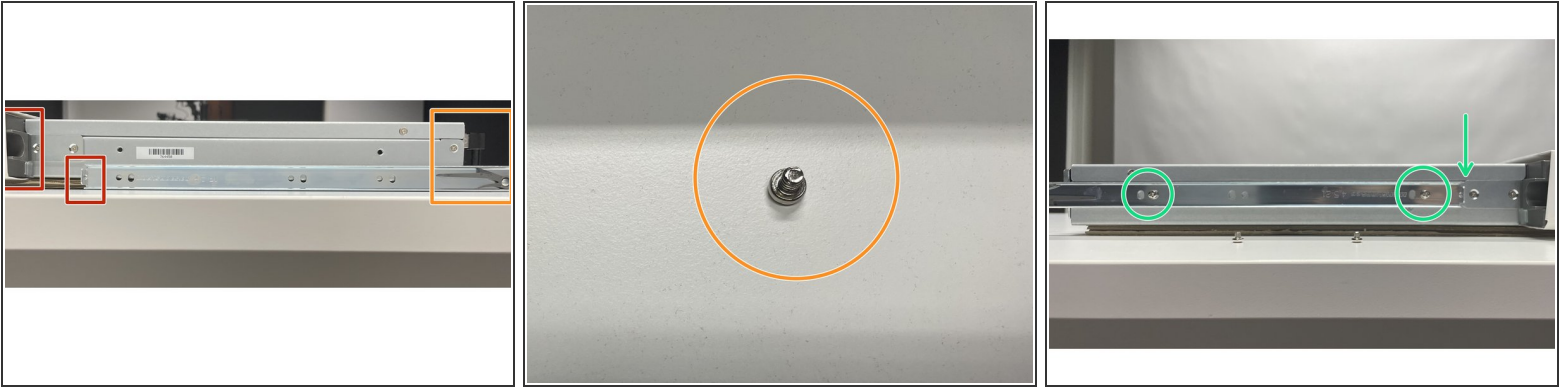
- 2 telescopic rails for the device
- Screw set for mounting the rails on the device and in the rack

Step 2 — Rails in detail



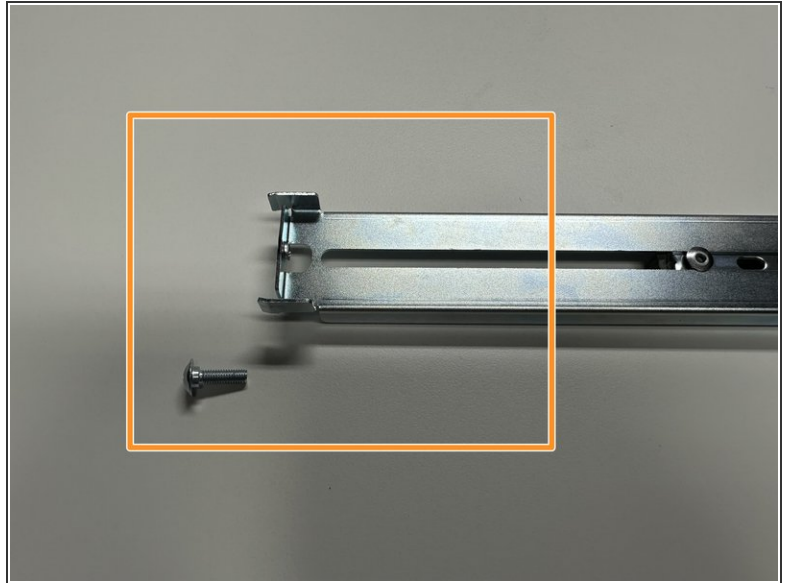
- The red marked part of the rail points to the front side of the rack
- The orange marked part is the mounting at the back of the rack
- Slide rail to which the device is screwed on
- Pull out the slide rail to the front side of the rail until the rail stops
- Push the small lever upwards. This releases the rail lock and you can remove the slide rail completely from the equipment rail.


Step 3 — Mounting the slide rails on the unit



- When mounting, the small angle of the slide rail points to the front side of the device.
 - The release lever of the rail points to the rear of the unit.
 - For mounting the 4 small Phillips screws are needed
 - The front hole of the slide rail is used in each case. The rail is flush with the front of the unit.
- ⚠ Achten sie darauf die Schrauben nicht zu verkanten, da sonst das Gewinde im Geräte Gehäuse beschädigt werden kann

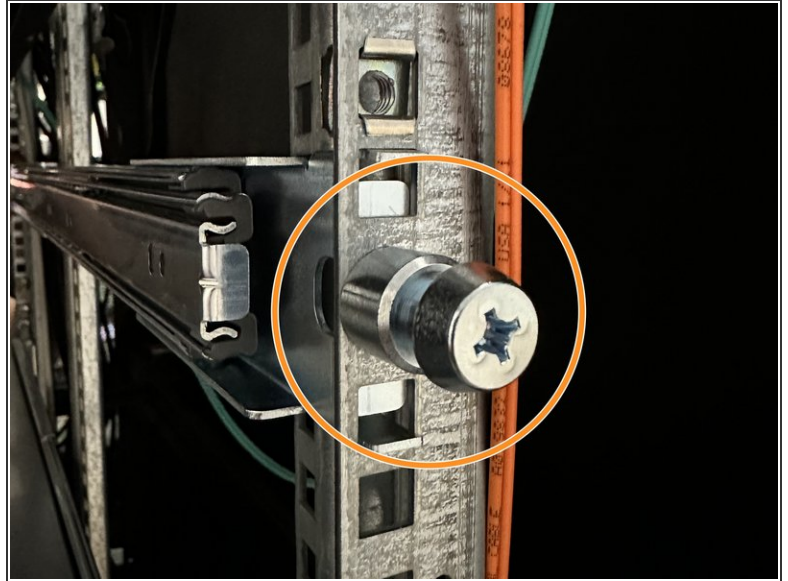
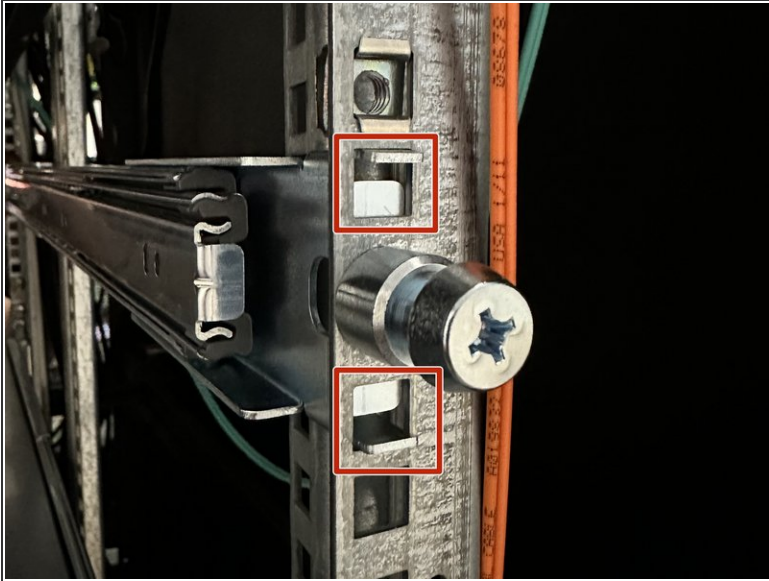
Step 4 — Mounting the rails in the rack



 No cage nuts are required.

- The enclosed mushroom head screw is required at the front of the unit. When mounted, the device arranges in this screw.
- On the rear side, the enclosed large Phillips head screw is required.

Step 5 — Mounting the rails in the rack - Front Side



- Slide the rail from the inside of the rack against the bracket so that the two brackets are supported in the rack and the screw hole is centered.
- Screw the mushroom head screw to the rail

Step 6 — Mounting the rails in the rack - Back Side

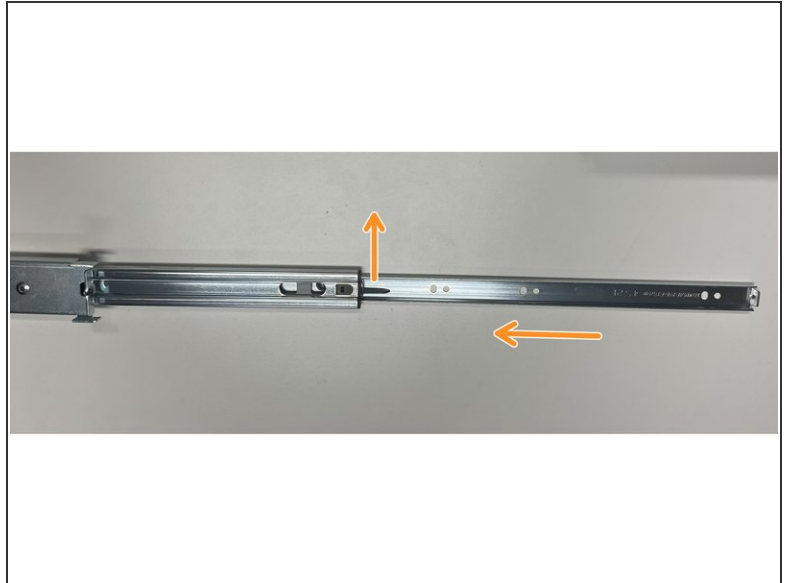


- Schieben sie die Schiene von der Innenseite des Racks gegen den Träger, so dass die beiden Winkel sich im Rack abstützen und das Schraubloch mittig sitzt

⚠ Make sure that the front and back of the rail are at the same height !

- Screw the crosshead screw to the rail

Step 7 — Installation of the machine



- The machine must be inserted so that the FAST logo is on the right side
- ⓘ Slide the machine with the mounted slide rails into the rack rails. Be careful not to tilt them.
- When the rails snap into place, the small levers in the slide rail must be released. Then push the rail in as far as it will go.
- ⓘ The mushroom head screw then locks with the device front and secures the device.