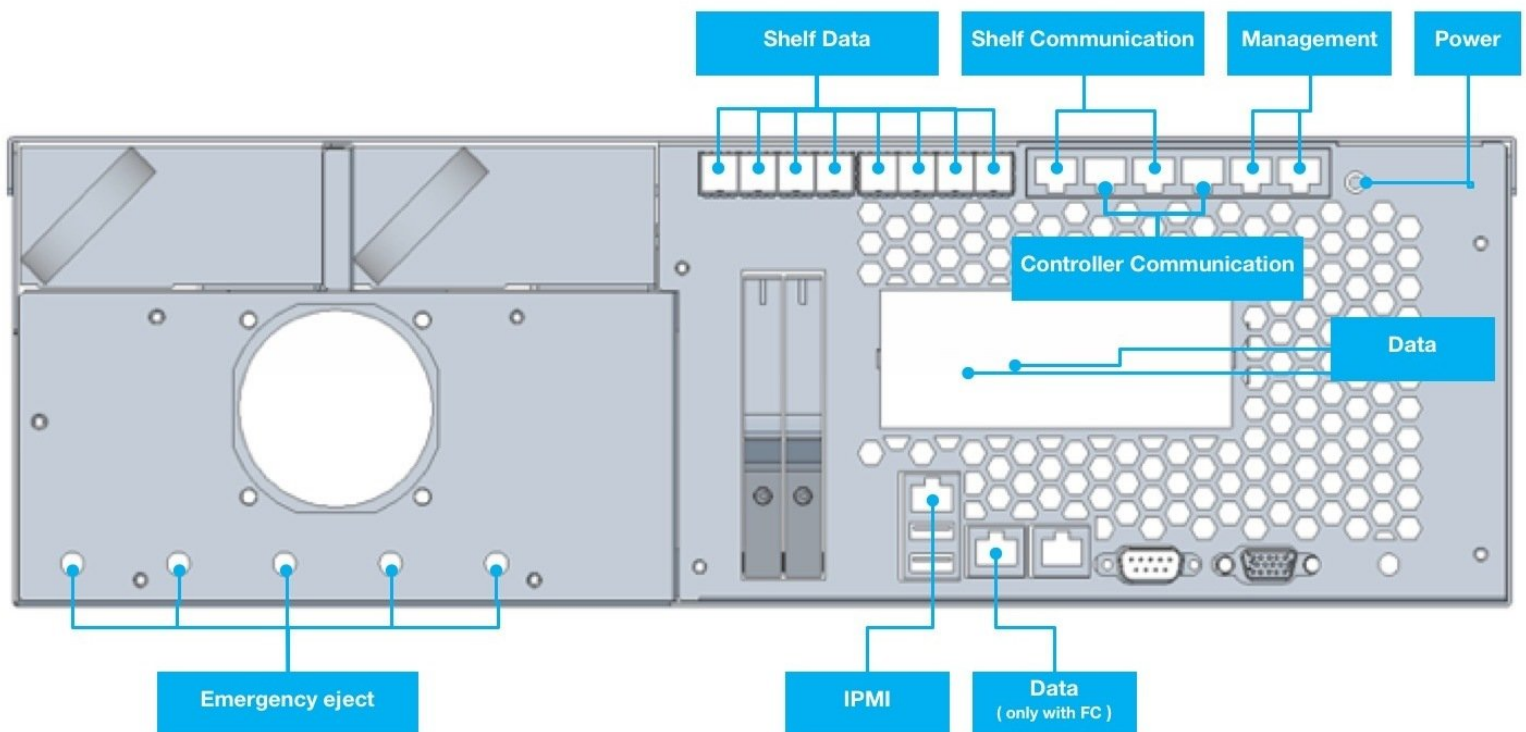




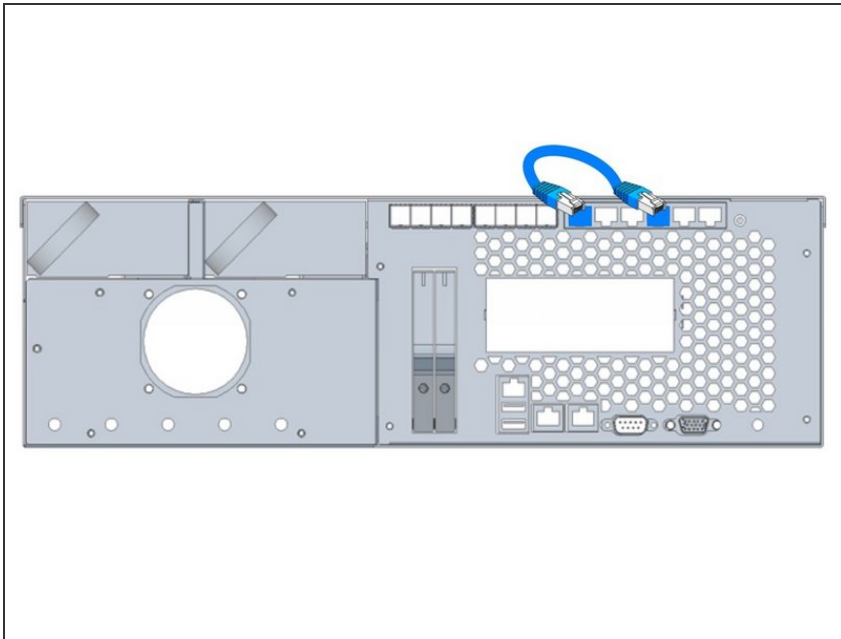
G5000 initial connection

This guide shows how to connect your G5000 to the network

Written By: Rene Weber

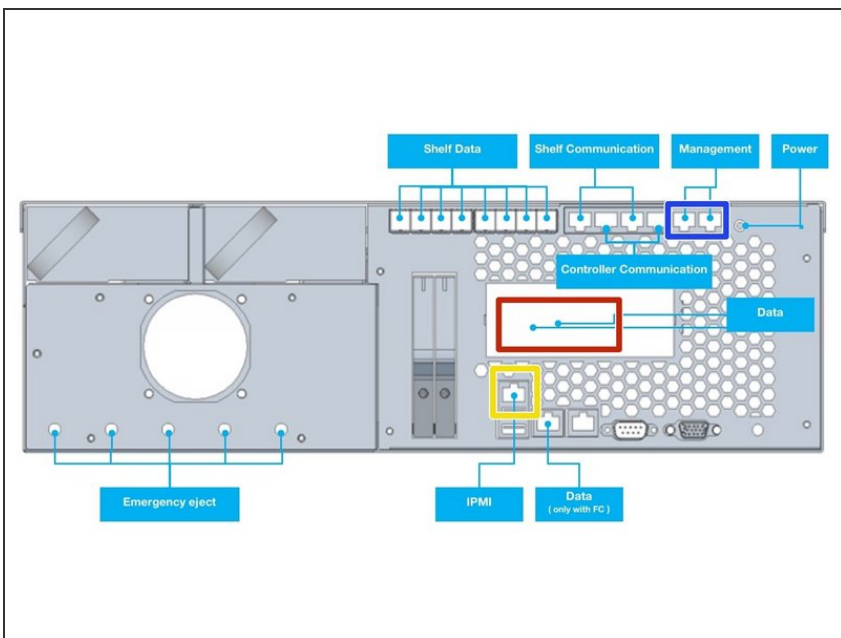


Step 1 — Connect loop cable



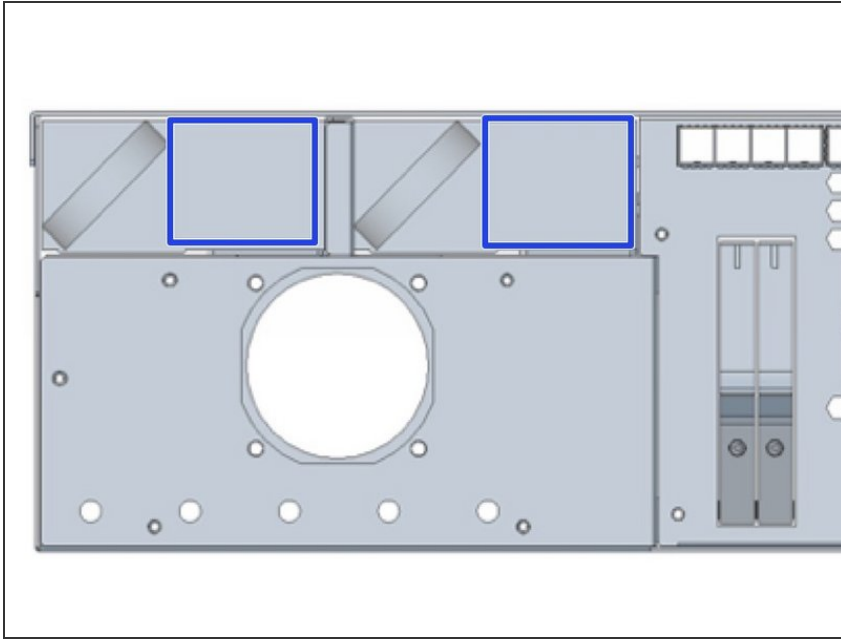
- Connect the delivered loop cable
- This cable connects shelf and server part of the controller
- ❗ If cable is not plugged the display will keep showing 'Starting up'
- ❗ If the cable is not connected a communication with the shelf is not possible

Step 2 — Connect network cables



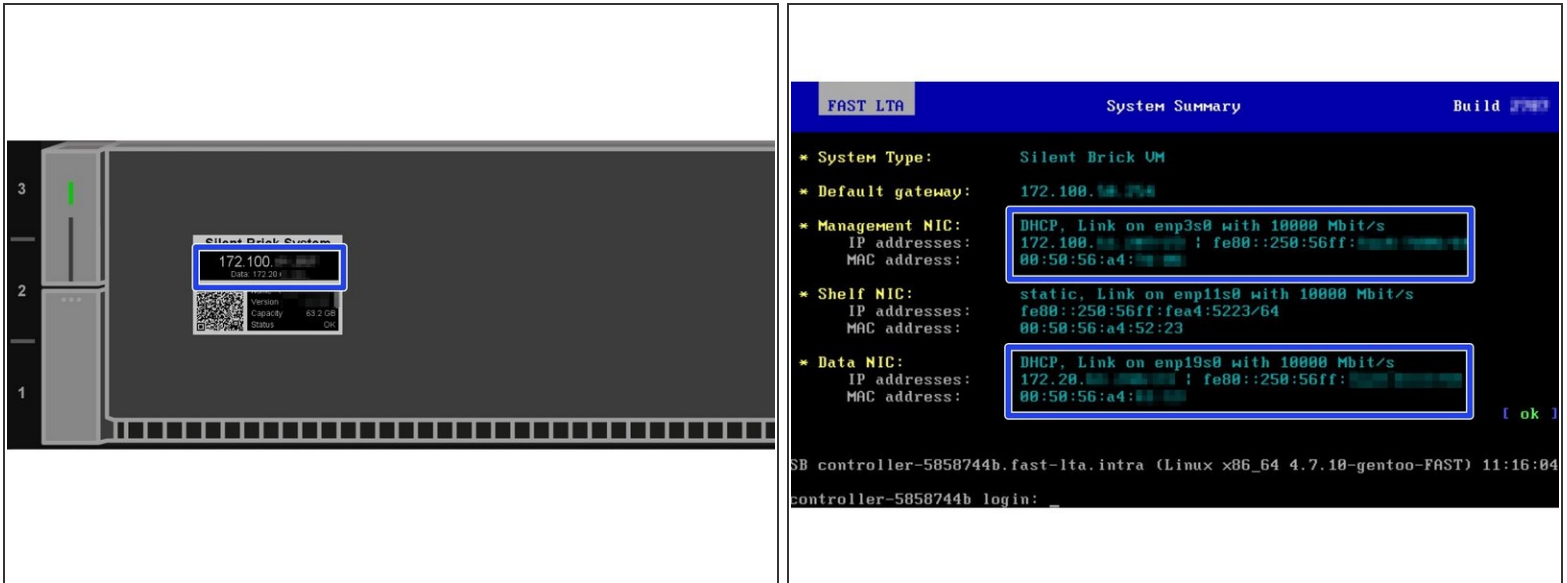
- ⚠ **Management and Data must not be in the same subnet**
- ❗ Management and Data may be combined to one interface later
- Connect 1GB Ethernet to Management port for Configuration via WebUI
- Connect 1GB Ethernet to IPMI port for hardware monitoring and service access
- Connect FibreChannel or 10GB Ethernet cable to data port (depending on ordered hardware)

Step 3 — Connect power supply



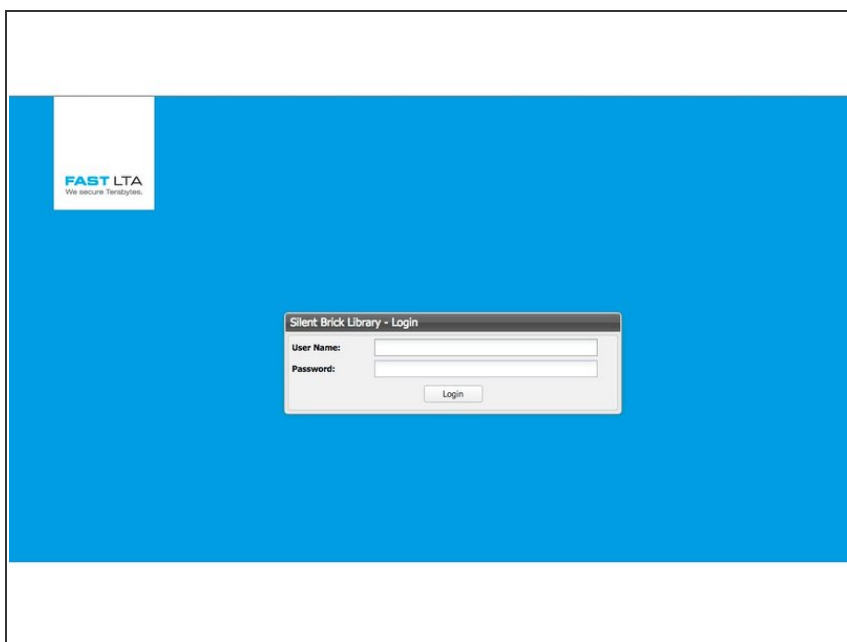
- Start up your controller by connecting the power cables

Step 4 — Receive the IP address



- G5000 will try to receive IP addresses via DHCP on management and data interfaces
- If no DHCP server can be found G5000 will assign fallback IP addresses as follows
 - Management: 192.168.1.1
 - Data: 192.168.2.1
- The assigned IP addresses may be checked via...
 - ...G5000 EPaper Display
 - ...Monitor console output

Step 5 — Connect to the UI



- Open the Webinterface via management ip "https://<ip>/"
- Default user: admin
- Default password: adminadmin